



# Two Rivers Greenway Trail Maintenance Report - 2021 Snapshot



PREPARED BY  
BMTS

NOVEMBER 10,  
2021

# About the 2021 Trail Maintenance Report

In the Summer of 2019, BMTS Staff released the Two Rivers Greenway Trail Maintenance Plan. This plan makes recommendations for maintenance of the trail sections that comprise the Two Rivers Greenway; it documents each trail in the system, including its infrastructure, needs, and plans for maintenance.

Within that plan, on-site trail assessments were performed to document each trail's design and usage, access and visibility, community attitudes toward the site, the site amenities, general site condition, corrective actions needed, planned capital improvements, and the strengths, weaknesses, and opportunities of the site.

The original plan detailed a need for conducting these site assessments every two years to ensure proper upkeep of the pavement and the trail surroundings. This 2021 report includes the basic updated assessment for pavement scores, maintenance condition, takes note of issues with signage, and any pressing corrective actions needed.





# Two Rivers Greenway Condition Report Collection Summary

To collect data in 2021, BMTS split the trails into roughly 1/10th mile sections in order to obtain more accurate and detailed information on segments throughout the system. Using the ArcGIS Collector App, BMTS collected data on:

**Pavement:** Scores range from 1-4. 1: Poor, 2: Fair, 3: Good, 4: Excellent. When assessing pavement, collectors looked at the frequency and depth of cracking.

**Maintenance:** Scores range from 1-3: 1: Poorly Maintained, 2: Maintained, 3: Well Maintained. When assessing maintenance, collectors analyzed the trail and surrounding conditions; whether there was trash, overgrown vegetation, encroachment on to the trail, etc.

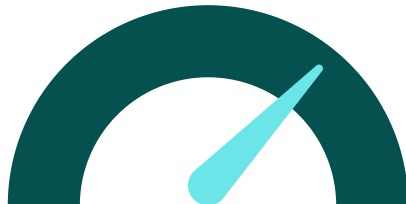
**Events:** When traversing the trails, collectors looked at any major hazards or items to note that should be addressed. Examples of these could be large potholes in the pavement that could cause a hazard for pedestrians.

**Signage:** When traversing the trail, collectors looked at the signage along the trails to see if any damage is noted. These signs are included in the report for municipalities to address.



# Overall Two Rivers Greenway Condition

## Pavement



72%

of Pavement is in Excellent  
or Good Condition



3.12

out of 4

Average Pavement Score

## Maintenance



98%

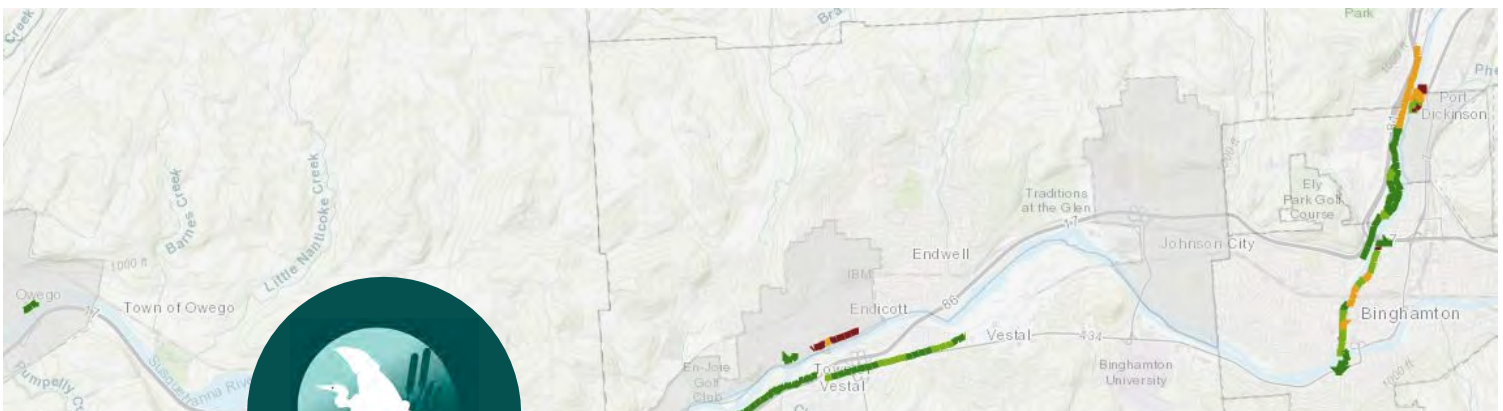
of the Trail is Maintained or  
Well Maintained



2.80

out of 3

Average Maintenance Score

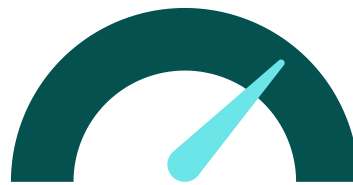


## Comments

- The Trail System is generally in good condition. However, with the system aging, municipalities should use Preventative Maintenance techniques to extend the life of the pavement: crack sealing, patching, seal coating.
- The Trail System is generally well maintained. In more suburban areas or areas with vegetation, routine maintenance (mowing, cutting back overgrown vegetation) should be completed.

# Trail System: Binghamton

## Pavement



76%

of Pavement is in Excellent  
or Good Condition



3.15

out of 4

Average Pavement Score

## Maintenance



98%

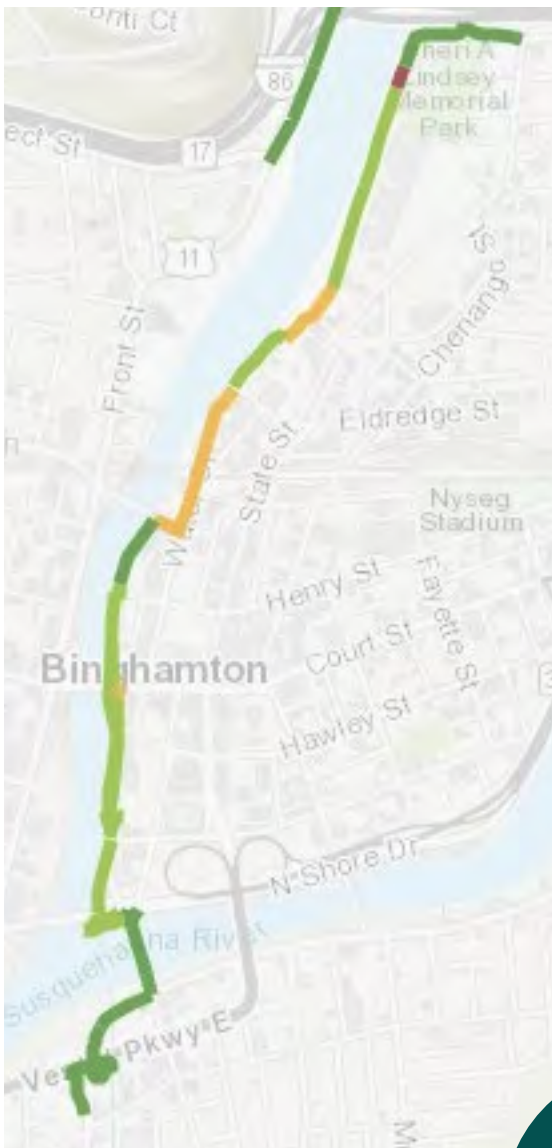
of the Trail is Maintained  
or Well Maintained



2.80

out of 3

Average Maintenance Score



## Comments



- Pavement:
  - Curb Ramps at the South Washington Street Bridge and 363/Washington Street intersection are in poor condition.
  - Lateral cracks, pooling near bridges, uneven pavement, edges sloping off the trail, and cracking were noted throughout the corridor.
- Maintenance:
  - Graffiti was noted at underpasses and tunnels.
  - Along the Riverwalk, knotweed is overgrown, floodwall, retaining wall, and the "Be Inspired" mural are starting to crumble, and gravel and debris are present on the trailway.
- Major Issues: Large pothole noted on ramp at Confluence Park. One bollard along the Riverwalk has been removed, but the footing is intact leaving a hazard for pedestrians and bicyclists.
- Signage: Several signs at the Confluence Park are not ADA accessible due to posting height and location. Additionally, several signs along the Riverwalk are damaged with large holes.



# Trail System: Front Street

## Pavement



100%

of Pavement is in Excellent  
or Good Condition



4

out of 4

Average Pavement  
Score

## Maintenance



100%

of the Trail is Maintained or  
Well Maintained



2.7

out of 3

Average Maintenance  
Score

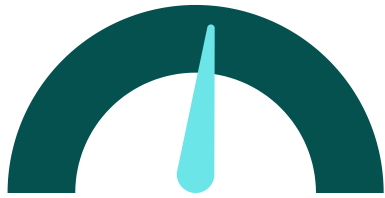
## Comments



- Pavement:
  - Newly established in 2019, the Front Street trail is in excellent condition. There are several manhole covers that are sunken in that could create hazardous conditions for cyclists and pedestrians.
- Maintenance:
  - The trail is very well maintained. There is some vegetation noted on the barrier that separates the trail from traffic and graffiti present along some sections of the trail.
- Major Issues: No major issues were noted.
- Signage: No issues with signage was noted.

# Trail System: Otsiningo Park

## Pavement



53%

of Pavement is in Excellent  
or Good Condition



2.97

out of 4

Average Pavement Score

## Maintenance



100%

of the Trail is Maintained or  
Well Maintained



2.94

out of 3

Average Maintenance  
Score



## Comments

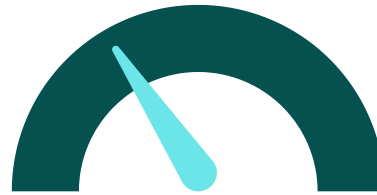


- Pavement:
  - Pavement in the Otsiningo Park Loop is mostly in good or excellent condition.
  - At the southern pedestrian and bicyclist entrance to the park, as well as small sections where loops connect, pavement has frequent and deep cracking.
  - The North end of the trail that extends to Howell Drive experiences frequent deep lateral cracks that should be addressed.
- Maintenance:
  - This trail is very well maintained. Most areas are consistently mowed with overgrown and invasive vegetation taken care of. In a few sections, some overgrown vegetation and Japanese Knotwood was noted.
- Major Issues: No major issues were noted.
- Signage: No issues with signage was noted.

# Trail System: Port Dickinson



## Pavement



33%

of Pavement is in Excellent or Good Condition

## Maintenance



100%

of the Trail is Maintained or Well Maintained



2.08

out of 4

Average Pavement Score



3

out of 3

Average Maintenance Score

## Comments



- Pavement:
  - Only 33% of the pavement at the Port Dickinson Community Park is in good condition, with 0% in excellent condition. 42% is in fair condition with 25% of the park's pavement in poor condition. Many holes and cracks are noted throughout the system which can create unsafe conditions for pedestrians.
- Maintenance:
  - The trail is very well maintained. No maintenance issues were noted during the data collection.
- Major Issues: No major issues were noted.
- Signage: No issues with signage was noted.



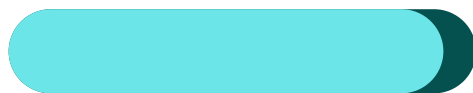
# Trail System: Vestal Rail Trail

## Pavement



100%

of Pavement is in Excellent or Good Condition



3.72

out of 4

Average Pavement Score

## Maintenance



100%

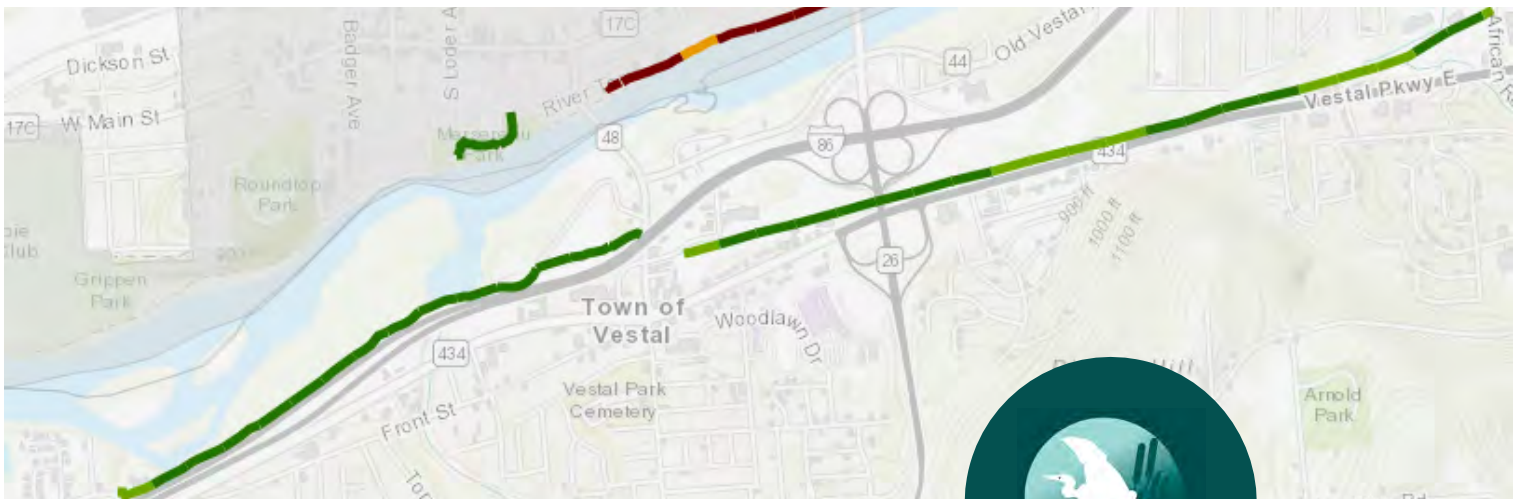
of the Trail is Maintained or Well Maintained



3

out of 3

Average Maintenance Score



## Comments

- Pavement:
  - The Vestal Rail Trail and its West Extension pavement is in good or excellent condition. In a few locations throughout the rail trail, lateral cracks, cracking from tree roots, and edge cracking were noted.
- Maintenance:
  - The trail is very well maintained. No maintenance issues were noted during the data collection.
- Major Issues: No major issues were noted.
- Signage: No issues with signage was noted.

# Trail System: Endicott Chugnut Trail



## Pavement



22%

of Pavement is in Excellent or  
Good Condition



1.78

out of 4  
Average Pavement Score

## Maintenance



89%

of the Trail is Maintained or  
Well Maintained



2.56

out of 3  
Average Maintenance Score

## Comments



- Pavement:
  - The West Extension of the Chugnut Trail is new as of the Summer of 2021. The pavement in this section is excellent. For the original section of the Chugnut Trail, 67% of the pavement is poor and 11% is fair, with no sections rated as good or excellent.
- Maintenance:
  - The trail is generally well maintained. Some sections have grass encroaching on the trail, even in the newly established West Extension.
- Major Issues: No major issues were noted.
- Signage: No issues with signage was noted.

# Trail System: Owego Riverwalk

## Pavement



100%

of Pavement is in Excellent or Good Condition



4

out of 4  
Average Pavement Score

## Maintenance



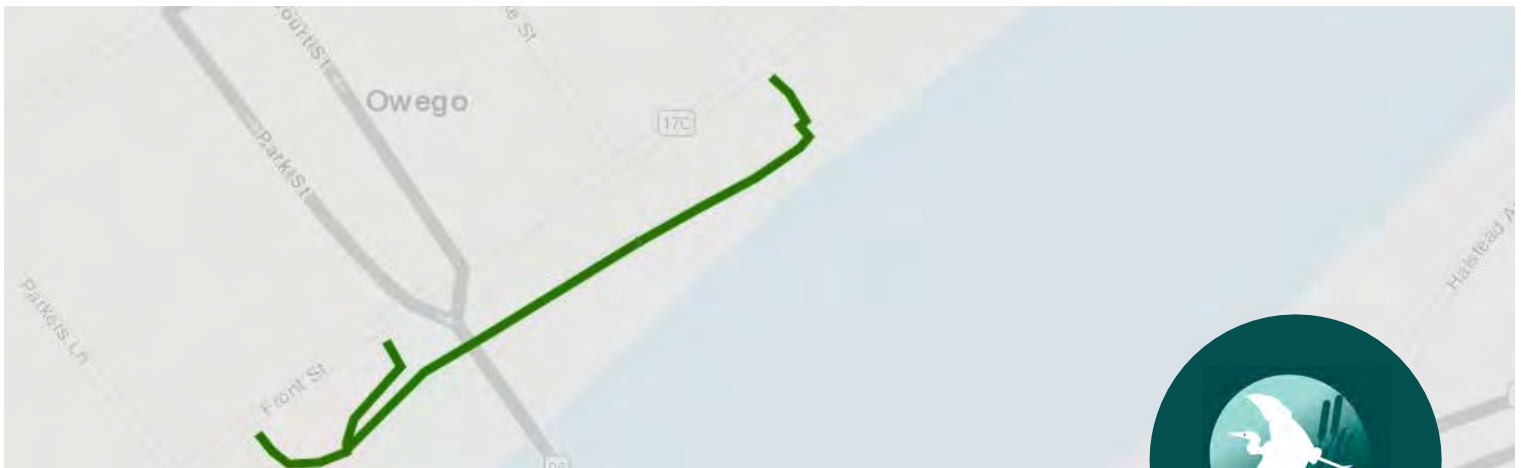
100%

of the Trail is Maintained or Well Maintained



3

out of 3  
Average Maintenance Score



## Comments

- Pavement:
  - The Owego Riverwalk uses a stamped concrete for the pavement. All sections of the riverwalk are in excellent condition.
- Maintenance:
  - The trail is very well maintained. There is minor vegetation overgrowing along the riverbed that should be addressed.
- Major Issues: No major issues were noted.
- Signage: No issues with signage was noted.



# Trail Photos



Photo 1. Binghamton | Curb ramp at the Intersection of the S. Washington Bridge Entrance and Route 363 in poor condition



Photo 2. Binghamton | Large hole in the pavement of a ramp at Confluence Park



Photo 3. Binghamton | Interpretive Sign at Confluence Park not ADA accessible



Photo 4. Binghamton | Interpretive Sign at Confluence Park not ADA accessible



Photo 5. Binghamton | Sign damage at MLK Promenade



Photo 6. Binghamton | Sign damage at Cheri A Lindsey Memorial Park



# Trail Photos



Photo 7. Binghamton | Graffiti at the underpass near Pennsylvania Avenue, along with pavement divots at the entrance to the underpass.



Photo 8. Binghamton | Crumbling wall along the Riverwalk near Binghamton University's Downtown Campus

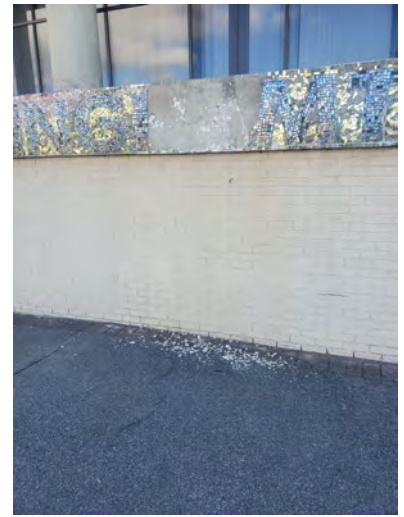


Photo 9. Crumbling Mural on the Riverwalk near Court Street



Photo 10. Binghamton | Hazardous bollard along the Riverwalk



Photo 11. Binghamton | Graffiti along the Riverwalk



Photo 12. Binghamton | Overgrown vegetation along the Riverwalk



# Trail Photos



Photo 13. Otsiningo Park I  
Overgrown Vegetation



Photo 14. Front Street I Graffiti  
along the barrier



Photo 15. Front Street I Overgrown  
vegetation



Photo 16. Endicott I Vegetation  
encroachment onto the trail and  
pavement



Photo 17. Endicott I Graffiti along  
the floodwall



Photo 18. Owego I Overgrown  
vegetation along the Riverwalk

# Appendix A: Rating Data

OBJECTID	Trail_ID	RatingID	Trail Name	SECTION	Condition (maintenance) 2021	Pavement Condition 2021	Notes 2021	Site Access	Responsibility	Trail Material	Usage
121	1	1.1	Binghamton Riverwalk	Confluence Park	2	3	water pools under bridge entrance. graffiti and spider webs in bridge	Public Road, Trail Connection	City of Binghamton	Asphalt	Pedestrian and Bike Path
122	1	1.13	Binghamton Riverwalk	Confluence Park	2	3	ramp has large pothole	Public Road, Trail Connection	City of Binghamton	Asphalt	Pedestrian and Bike Path
123	1	1.12	Binghamton Riverwalk	Confluence Park	3	3		Public Road, Trail Connection	City of Binghamton	Asphalt	Pedestrian and Bike Path
124	1	1.11	Binghamton Riverwalk	Confluence Park	3	3		Public Road, Trail Connection	City of Binghamton	Asphalt	Pedestrian and Bike Path
125	1	1.2	Binghamton Riverwalk	South Washington Street Bridge	3	4		Public Road, Trail Connection	City of Binghamton	Asphalt	Pedestrian and Bike Path
126	1	1.21	Binghamton Riverwalk	South Washington Street Bridge	3	4	curb ramp in bad condition, needs to be brought in to compliance. and the flood wall is disintegrating.	Public Road, Trail Connection	City of Binghamton	Asphalt	Pedestrian and Bike Path
127	1	1.22	Binghamton Riverwalk	South Washington Street Bridge	3	4	curb ramp needs to be brought into compliance.	Public Road, Trail Connection	City of Binghamton	Cement and Asphalt Loop	Pedestrian and Bike Path
128	1	1.23	Binghamton Riverwalk	South Washington Street Bridge	3	4	some light cracks	Public Road, Trail Connection	City of Binghamton	Cement and Asphalt Loop	Pedestrian and Bike Path
129	1	1.24	Binghamton Riverwalk	South Washington Street Bridge	2	4	sidewalk slightly cracked in one spot.	Public Road, Trail Connection	City of Binghamton	Cement and Asphalt Loop	Pedestrian and Bike Path
130	1	1.3	Binghamton Riverwalk	Pennsylvania Avenue Bike Loop	2	4		Public Road, Trail Connection	City of Binghamton	Cement and Asphalt Loop	Pedestrian and Bike Path
131	1	1.31	Binghamton Riverwalk	Pennsylvania Avenue Bike Loop	2	4	water pools over bridge. graffiti on walls. grass growing in between sidewalk cracks.	Public Road, Trail Connection	City of Binghamton	Cement and Asphalt Loop	Pedestrian and Bike Path
132	1	1.32	Binghamton Riverwalk	Pennsylvania Avenue Bike Loop	2	4	grass growing in cracks	Public Road, Trail Connection	City of Binghamton	Cement and Asphalt Loop	Pedestrian and Bike Path
133	1	1.33	Binghamton Riverwalk	Pennsylvania Avenue Bike Loop	2	4	pavement dips under ramp bridge and water pools. under ramp bridge covered in webs and has graffiti. weeds growing under ramp underpass. rock wall under penn Ave underpass starting bow out in sections.	Public Road, Trail Connection	City of Binghamton	Cement and Asphalt Loop	Pedestrian and Bike Path
1	2	2.11	Binghamton Riverwalk	River Walk: North Shore Drive to Susquehanna Street	2	3	knotweed goes over head. vegetation on wall. flood wall crumbling. some pavement starting to slope.	Trail Connection	City of Binghamton	Asphalt	Pedestrian and Bike Path
2	2	2.13	Binghamton Riverwalk	River Walk: Court Street to East Clinton Street	3	4		Public Road, Trail Connection	City of Binghamton	Cement	Pedestrian and Bike Path
3	2	2.16	Binghamton Riverwalk	River Walk: Pedestrian and Bike Path Along Water Street to Ramp Past Eldredge Street	2	2		Public Road, Trail Connection	City of Binghamton	Asphalt	Pedestrian and Bike Path
4	2	2.2	Binghamton Riverwalk	River Walk: Ramp to Cheri Lindsay Park	3	3		Public Road, Trail Connection	City of Binghamton	Asphalt	Pedestrian and Bike Path
6	2	2.33	Binghamton Riverwalk	River Walk: Susquehanna Street to Mosaic Area preceding Court Street	3	3		Trail Connection	City of Binghamton	Asphalt	Pedestrian and Bike Path
102	2	2.15	Binghamton Riverwalk	River Walk: Court Street to East Clinton Street	3	3		Public Road, Trail Connection	City of Binghamton	Cement	Pedestrian and Bike Path
103	2	2.14	Binghamton Riverwalk	River Walk: Court Street to East Clinton Street	3	3	uneven pavement	Public Road, Trail Connection	City of Binghamton	Cement	Pedestrian and Bike Path
105	2	2.18	Binghamton Riverwalk	River Walk: Pedestrian and Bike Path Along Water Street to Ramp Past Eldredge Street	2	2	uneven pavement. cracking. puddles	Public Road, Trail Connection	City of Binghamton	Asphalt	Pedestrian and Bike Path
106	2	2.17	Binghamton Riverwalk	River Walk: Pedestrian and Bike Path Along Water Street to Ramp Past Eldredge Street	2	2	needs sweeping. uneven pavement. updated crossings	Public Road, Trail Connection	City of Binghamton	Asphalt	Pedestrian and Bike Path
108	2	2.24	Binghamton Riverwalk	River Walk: Ramp to Cheri Lindsay Park	3	3		Public Road, Trail Connection	City of Binghamton	Asphalt	Pedestrian and Bike Path
109	2	2.23	Binghamton Riverwalk	River Walk: Ramp to Cheri Lindsay Park	2	2	main part of trail ok but large lateral cracks.. edges sloping off. vegetation overgrown	Public Road, Trail Connection	City of Binghamton	Asphalt	Pedestrian and Bike Path
111	2	2.21	Binghamton Riverwalk	River Walk: Ramp to Cheri Lindsay Park	3	3	larger lateral cracks.	Public Road, Trail Connection	City of Binghamton	Asphalt	Pedestrian and Bike Path

113	2	2.31	Binghamton Riverwalk	Shared Automobile and Bike Lane from Cheri Lindsay Park to Otsiningo Park	1	1	lots of cracking and gravel	Public Road, Trail Connection	City of Binghamton	Cement sidewalk and roadway improvements Design and	Pedestrian and Bike Path
114	2	2.3	Binghamton Riverwalk	Shared Automobile and Bike Lane from Cheri Lindsay Park to Otsiningo Park	3	4		Public Road, Trail Connection	City of Binghamton	Cement sidewalk and roadway improvements Design and	Pedestrian and Bike Path
115	2	2.29	Binghamton Riverwalk	Shared Automobile and Bike Lane from Cheri Lindsay Park to Otsiningo Park	3	4		Public Road, Trail Connection	City of Binghamton	Cement sidewalk and roadway improvements Design and	Pedestrian and Bike Path
119	2	2.34	Binghamton Riverwalk	River Walk: Susquehanna Street to Mosaic Area preceding Court Street	2	2	pavement cracks and sunken where drainage is. cross slope.	Trail Connection	City of Binghamton	Asphalt	Pedestrian and Bike Path
120	2	2.32	Binghamton Riverwalk	River Walk: Susquehanna Street to Mosaic Area preceding Court Street	3	3	pavement cracks	Trail Connection	City of Binghamton	Asphalt	Pedestrian and Bike Path
142	2	2.37	Binghamton Riverwalk	River Walk: North Shore Drive to Susquehanna Street	2	3	some cracking in pavement and overgrown vegetation	Public Road, Trail Connection	City of Binghamton	Cement and Asphalt Loop	Pedestrian and Bike Path
143	2	2.36	Binghamton Riverwalk	River Walk: North Shore Drive to Susquehanna Street	2	3	graffiti on walls. knotweed overgrown. pavement cracking.	Public Road, Trail Connection	City of Binghamton	Cement and Asphalt Loop	Pedestrian and Bike Path
144	2	2.35	Binghamton Riverwalk	River Walk: North Shore Drive to Susquehanna Street	2	3	light cracking and graffiti	Public Road, Trail Connection	City of Binghamton	Cement and Asphalt Loop	Pedestrian and Bike Path
7	3	3.11	Otsiningo Park	Otsiningo Park	3	2		Public Road, Trail Connection	Broome County	Asphalt	Pedestrian and Bike Path
60	3	3.37	Otsiningo Park	Otsiningo Park	3	2	lots of cracking	Public Road, Trail Connection	Broome County	Asphalt	Pedestrian and Bike Path
61	3	3.36	Otsiningo Park	Otsiningo Park	3	2		Public Road, Trail Connection	Broome County	Asphalt	Pedestrian and Bike Path
62	3	3.35	Otsiningo Park	Otsiningo Park	3	4		Public Road, Trail Connection	Broome County	Asphalt	Pedestrian and Bike Path
63	3	3.34	Otsiningo Park	Otsiningo Park	3	4		Public Road, Trail Connection	Broome County	Asphalt	Pedestrian and Bike Path
64	3	3.33	Otsiningo Park	Otsiningo Park	3	3		Public Road, Trail Connection	Broome County	Asphalt	Pedestrian and Bike Path
65	3	3.32	Otsiningo Park	Otsiningo Park	3	4	slight cracking on edge	Public Road, Trail Connection	Broome County	Asphalt	Pedestrian and Bike Path
66	3	3.31	Otsiningo Park	Otsiningo Park	3	4		Public Road, Trail Connection	Broome County	Asphalt	Pedestrian and Bike Path
67	3	3.3	Otsiningo Park	Otsiningo Park	3	4		Public Road, Trail Connection	Broome County	Asphalt	Pedestrian and Bike Path
68	3	3.29	Otsiningo Park	Otsiningo Park	2	4	overgrown knotweed	Public Road, Trail Connection	Broome County	Asphalt	Pedestrian and Bike Path
69	3	3.28	Otsiningo Park	Otsiningo Park	2	4	overgrown vegetation	Public Road, Trail Connection	Broome County	Asphalt	Pedestrian and Bike Path
70	3	3.27	Otsiningo Park	Otsiningo Park	3	4		Public Road, Trail Connection	Broome County	Asphalt	Pedestrian and Bike Path
71	3	3.26	Otsiningo Park	Otsiningo Park	3	4		Public Road, Trail Connection	Broome County	Asphalt	Pedestrian and Bike Path
72	3	3.25	Otsiningo Park	Otsiningo Park	3	4		Public Road, Trail Connection	Broome County	Asphalt	Pedestrian and Bike Path
73	3	3.24	Otsiningo Park	Otsiningo Park	3	4		Public Road, Trail Connection	Broome County	Asphalt	Pedestrian and Bike Path
74	3	3.23	Otsiningo Park	Otsiningo Park	3	4		Public Road, Trail Connection	Broome County	Asphalt	Pedestrian and Bike Path
75	3	3.22	Otsiningo Park	Otsiningo Park	3	2		Public Road, Trail Connection	Broome County	Asphalt	Pedestrian and Bike Path
76	3	3.21	Otsiningo Park	Otsiningo Park	3	2	lots of cracking	Public Road, Trail Connection	Broome County	Asphalt	Pedestrian and Bike Path
77	3	3.2	Otsiningo Park	Otsiningo Park	3	2		Public Road, Trail Connection	Broome County	Asphalt	Pedestrian and Bike Path
78	3	3.19	Otsiningo Park	Otsiningo Park	3	2		Public Road, Trail Connection	Broome County	Asphalt	Pedestrian and Bike Path



79	3	3.18	Otsiningo Park	Otsiningo Park	3	2		Public Road, Trail Connection	Broome County	Asphalt	Pedestrian and Bike Path
80	3	3.17	Otsiningo Park	Otsiningo Park	3	2		Public Road, Trail Connection	Broome County	Asphalt	Pedestrian and Bike Path
81	3	3.16	Otsiningo Park	Otsiningo Park	3	2		Public Road, Trail Connection	Broome County	Asphalt	Pedestrian and Bike Path
82	3	3.15	Otsiningo Park	Otsiningo Park	3	2		Public Road, Trail Connection	Broome County	Asphalt	Pedestrian and Bike Path
83	3	3.14	Otsiningo Park	Otsiningo Park	3	2		Public Road, Trail Connection	Broome County	Asphalt	Pedestrian and Bike Path
84	3	3.13	Otsiningo Park	Otsiningo Park	3	2		Public Road, Trail Connection	Broome County	Asphalt	Pedestrian and Bike Path
85	3	3.12	Otsiningo Park	Otsiningo Park	3	2		Public Road, Trail Connection	Broome County	Asphalt	Pedestrian and Bike Path
86	3	3.1	Otsiningo Park	Otsiningo Park	3	2		Public Road, Trail Connection	Broome County	Asphalt	Pedestrian and Bike Path
95	3	3.41	Otsiningo Park	Otsiningo to Front St	3	3	slight cracking on the hill	Public Road	Broome County	Asphalt	Pedestrian and Bike Path
137	3	3.39	Otsiningo Park	Otsiningo Park	3	4	cracking in one section maybe split	Public Road, Trail Connection	Broome County	Asphalt	Pedestrian and Bike Path
138	3	3.4	Otsiningo Park	Otsiningo Park	3	4	some edge cracking	Public Road, Trail Connection	Broome County	Asphalt	Pedestrian and Bike Path
8	4	4.1	Port Dickinson Community Park	Port Dickinson Community Park Loop	3	1		Public Road, Waterfront Access	Village of Port Dickinson	Asphalt	Pedestrian
87	4	4.18	Port Dickinson Community Park	Port Dickinson Community Park Loop	3	2		Public Road, Waterfront Access	Village of Port Dickinson	Asphalt	Pedestrian
88	4	4.17	Port Dickinson Community Park	Port Dickinson Community Park Loop	3	2		Public Road, Waterfront Access	Village of Port Dickinson	Asphalt	Pedestrian
89	4	4.16	Port Dickinson Community Park	Port Dickinson Community Park Loop	3	1	holes and cracks	Public Road, Waterfront Access	Village of Port Dickinson	Asphalt	Pedestrian
90	4	4.15	Port Dickinson Community Park	Port Dickinson Community Park Loop	3	2		Public Road, Waterfront Access	Village of Port Dickinson	Asphalt	Pedestrian
91	4	4.14	Port Dickinson Community Park	Port Dickinson Community Park Loop	3	2		Public Road, Waterfront Access	Village of Port Dickinson	Asphalt	Pedestrian
92	4	4.13	Port Dickinson Community Park	Port Dickinson Community Park Loop	3	3		Public Road, Waterfront Access	Village of Port Dickinson	Asphalt	Pedestrian
93	4	4.12	Port Dickinson Community Park	Port Dickinson Community Park Loop	3	3		Public Road, Waterfront Access	Village of Port Dickinson	Asphalt	Pedestrian
94	4	4.1	Port Dickinson Community Park	Port Dickinson Community Park Loop	3	3		Public Road, Waterfront Access	Village of Port Dickinson	Asphalt	Pedestrian
139	4	4.22	Port Dickinson Community Park	Port Dickinson Community Park Loop	3	3		Public Road, Waterfront Access	Village of Port Dickinson	Asphalt	Pedestrian
140	4	4.2	Port Dickinson Community Park	Port Dickinson Community Park Loop	3	2		Public Road, Waterfront Access	Village of Port Dickinson	Asphalt	Pedestrian
141	4	4.21	Port Dickinson Community Park	Port Dickinson Community Park Loop	3	1		Public Road, Waterfront Access	Village of Port Dickinson	Asphalt	Pedestrian
9	5	5.11	Vestal Rail Trail	Vestal Rail Trail	3	4	lateral cracks	Public Road	Vestal	Asphalt	Pedestrian and Bike Path
30	5	5.32	Vestal Rail Trail	Vestal Rail Trail	3	3	lateral cracks	Public Road	Vestal	Asphalt	Pedestrian and Bike Path
31	5	5.31	Vestal Rail Trail	Vestal Rail Trail	3	4	lateral cracks	Public Road	Vestal	Asphalt	Pedestrian and Bike Path
32	5	5.3	Vestal Rail Trail	Vestal Rail Trail	3	4	lateral cracks	Public Road	Vestal	Asphalt	Pedestrian and Bike Path
33	5	5.29	Vestal Rail Trail	Vestal Rail Trail	3	4	lateral cracks	Public Road	Vestal	Asphalt	Pedestrian and Bike Path
34	5	5.28	Vestal Rail Trail	Vestal Rail Trail	3	4	lateral cracks	Public Road	Vestal	Asphalt	Pedestrian and Bike Path
35	5	5.27	Vestal Rail Trail	Vestal Rail Trail	3	4	lateral cracks	Public Road	Vestal	Asphalt	Pedestrian and Bike Path
36	5	5.26	Vestal Rail Trail	Vestal Rail Trail	3	4	lateral cracks	Public Road	Vestal	Asphalt	Pedestrian and Bike Path

37	5	5.25	Vestal Rail Trail	Vestal Rail Trail	3	4	lateral cracks	Public Road	Vestal	Asphalt	Pedestrian and Bike Path
38	5	5.24	Vestal Rail Trail	Vestal Rail Trail	3	3	lateral, root, edge cracking	Public Road	Vestal	Asphalt	Pedestrian and Bike Path
39	5	5.23	Vestal Rail Trail	Vestal Rail Trail	3	3	lateral, root, edge cracking	Public Road	Vestal	Asphalt	Pedestrian and Bike Path
40	5	5.22	Vestal Rail Trail	Vestal Rail Trail	3	3	lateral, root, edge cracking	Public Road	Vestal	Asphalt	Pedestrian and Bike Path
41	5	5.21	Vestal Rail Trail	Vestal Rail Trail	3	3	lateral cracks	Public Road	Vestal	Asphalt	Pedestrian and Bike Path
42	5	5.2	Vestal Rail Trail	Vestal Rail Trail	3	4	lateral cracks	Public Road	Vestal	Asphalt	Pedestrian and Bike Path
43	5	5.19	Vestal Rail Trail	Vestal Rail Trail	3	4	lateral cracks	Public Road	Vestal	Asphalt	Pedestrian and Bike Path
44	5	5.18	Vestal Rail Trail	Vestal Rail Trail	3	4	lateral cracks	Public Road	Vestal	Asphalt	Pedestrian and Bike Path
45	5	5.17	Vestal Rail Trail	Vestal Rail Trail	3	4	lateral cracks	Public Road	Vestal	Asphalt	Pedestrian and Bike Path
46	5	5.16	Vestal Rail Trail	Vestal Rail Trail	3	3	lateral cracks and edge cracks. some root cracks	Public Road	Vestal	Asphalt	Pedestrian and Bike Path
47	5	5.15	Vestal Rail Trail	Vestal Rail Trail	3	3	lateral cracks and root cracks. some edge cracking.	Public Road	Vestal	Asphalt	Pedestrian and Bike Path
48	5	5.14	Vestal Rail Trail	Vestal Rail Trail	3	3	lateral cracks and root cracks. some edge cracking.	Public Road	Vestal	Asphalt	Pedestrian and Bike Path
49	5	5.13	Vestal Rail Trail	Vestal Rail Trail	3	4	lateral cracks	Public Road	Vestal	Asphalt	Pedestrian and Bike Path
50	5	5.1	Vestal Rail Trail	Vestal Rail Trail	3	3		Public Road	Vestal	Asphalt	Pedestrian and Bike Path
10	6	6.11	Vestal Rail Trail	Vestal Rail Trail Extension	3	4		Public Road	Vestal	Asphalt	Pedestrian and Bike Path
16	6	6.24	Vestal Rail Trail	Vestal Rail Trail Extension	3	4		Public Road	Vestal	Asphalt	Pedestrian and Bike Path
17	6	6.23	Vestal Rail Trail	Vestal Rail Trail Extension	3	4		Public Road	Vestal	Asphalt	Pedestrian and Bike Path
18	6	6.22	Vestal Rail Trail	Vestal Rail Trail Extension	3	4		Public Road	Vestal	Asphalt	Pedestrian and Bike Path
19	6	6.21	Vestal Rail Trail	Vestal Rail Trail Extension	3	4		Public Road	Vestal	Asphalt	Pedestrian and Bike Path
20	6	6.2	Vestal Rail Trail	Vestal Rail Trail Extension	3	4		Public Road	Vestal	Asphalt	Pedestrian and Bike Path
21	6	6.19	Vestal Rail Trail	Vestal Rail Trail Extension	3	4		Public Road	Vestal	Asphalt	Pedestrian and Bike Path
22	6	6.18	Vestal Rail Trail	Vestal Rail Trail Extension	3	4		Public Road	Vestal	Asphalt	Pedestrian and Bike Path
23	6	6.17	Vestal Rail Trail	Vestal Rail Trail Extension	3	4		Public Road	Vestal	Asphalt	Pedestrian and Bike Path
24	6	6.16	Vestal Rail Trail	Vestal Rail Trail Extension	3	4		Public Road	Vestal	Asphalt	Pedestrian and Bike Path
25	6	6.15	Vestal Rail Trail	Vestal Rail Trail Extension	3	4		Public Road	Vestal	Asphalt	Pedestrian and Bike Path
26	6	6.14	Vestal Rail Trail	Vestal Rail Trail Extension	3	4		Public Road	Vestal	Asphalt	Pedestrian and Bike Path
27	6	6.13	Vestal Rail Trail	Vestal Rail Trail Extension	3	4		Public Road	Vestal	Asphalt	Pedestrian and Bike Path
28	6	6.12	Vestal Rail Trail	Vestal Rail Trail Extension	3	4		Public Road	Vestal	Asphalt	Pedestrian and Bike Path
29	6	6.1	Vestal Rail Trail	Vestal Rail Trail Extension	3	3		Public Road	Vestal	Asphalt	Pedestrian and Bike Path
51	7	7.18	Chugnut Trail	Chugnut Trail	1	1		Public Road	Endicott	Asphalt	Pedestrian
52	7	7.17	Chugnut Trail	Chugnut Trail	3	1		Public Road	Endicott	Asphalt	Pedestrian

53	7	7.16	Chugnut Trail	Chugnut Trail	3	2		Public Road	Endicott	Asphalt	Pedestrian
54	7	7.15	Chugnut Trail	Chugnut Trail	3	1		Public Road	Endicott	Asphalt	Pedestrian
55	7	7.14	Chugnut Trail	Chugnut Trail	3	1		Public Road	Endicott	Asphalt	Pedestrian
56	7	7.13	Chugnut Trail	Chugnut Trail	2	1		Public Road	Endicott	Asphalt	Pedestrian
57	7	7.12	Chugnut Trail	Chugnut Trail	2	1		Public Road	Endicott	Asphalt	Pedestrian
134	7	7.21	Chugnut Trail	Chugnut Trail - West Mersereau Park	3	4		Public Road	Endicott	Asphalt	Pedestrian
135	7	7.2	Chugnut Trail	Chugnut Trail - West Mersereau Park	3	4	need to trim the grass on the pavement that is encroaching on the trail	Public Road	Endicott	Asphalt	Pedestrian
12	8	8.11	Owego Riverwalk	Owego Riverwalk	3	4	Crack near the steps	Public Road	Owego	Stamped Cement and Stone	Pedestrian
14	8	8.1	Owego Riverwalk	Owego Riverwalk	3	4		Public Road	Owego	Stamped Cement and Stone	Pedestrian
15	8	8.12	Owego Riverwalk	Owego Riverwalk	3	4	good overall maintenance. the vegetation next to the river needs to be trimmed.	Public Road	Owego	Stamped Cement and Stone	Pedestrian
13	9	9.11	Front Street	Front Street Multi-use path	2	4	grafiti and vegetation	Public Road	∅	Asphalt	Pedestrian and Bike Path
96	9	9.15	Front Street	Front Street Multi-use path	3	4		Public Road	∅	Asphalt	Pedestrian and Bike Path
98	9	9.13	Front Street	Front Street Multi-use path	3	4	some vegetation on the barrier. manhole covers are sunken.	Public Road	∅	Asphalt	Pedestrian and Bike Path

