

# Pavement Condition Rating Summary 2022

Non-State Federal Aid Eligible Roadways  
(as of July 26 – August 4)

**BMTS**





**5**  
Poor

Frequent

Moderate  
to  
Severe



**5**  
Poor

Frequent

Moderate  
to  
Severe

Asphalt

F-14



**6**  
Fair

Frequent

Moderate



**6**  
Fair

Frequent

Moderate

F-13

Asphalt

## Pavement Surface Rating Based on Frequency and Severity Descriptions

FREQUENCY		SEVERITY								
		None	Slight	Minor	Moderate	Moderate to Severe	Severe	Very Severe	Travel is Impaired	Impas- sible
No distress is present. A single random defect per 0.10 mile is allowed.	None	10 / 9	9	-	-	-	-	-	-	-
Most of the pavement is free of distress. One or two cracks or distresses are visible for the next 0.10 mile.	Infrequent	-	8	8	8	7	7	-	-	-
Much of the pavement is free of cracking. Large blocks of distress-free pavement are present.	Infrequent to Occasional	-	8	7	7	7	6	6	-	-
Much (<1/2) to most (>1/2) of the pavement is cracked. Uncracked or undistressed blocks of pavement range from 20-30 ft per lane to 12 ft per lane.	Occasional to Frequent	-	7	7	6	6	5	5	-	-
Nearly all the pavement is cracked. Uncracked or undistressed blocks of pavement are 12 ft square or less	Frequent	-	7	6	6	5	4	3	2	1
Mostly cracked. Cracks or distress are continuous and spaced only a few feet apart.	Very Frequent	-	6	6	5	5	4	3	2	1

Slight	Cracks are tight, single and only a few feet long. Tight, single longitudinal joint cracks, partial or continuous, are included.
Minor	Cracks are generally < 1/8 inch wide, some with minor secondary cracks, no or very few connected cracks. May have a few small spalls (< 1 ft square).
Moderate	Cracks are generally >1/8 inch wide; secondary cracking is common, some cracks connected; may have some minor popouts or small (1-2 ft) to medium (3-4 ft) patching.
Moderate to Severe	Distresses vary from "Moderate" to "Severe."
Severe	Cracks are wide and/or have extensive interconnected secondary cracking; holes, loose material and/or patching are common, patches may have patches.
Very Severe	Cracks are very wide, holes and/or patching is extensive; patches extend across the full lane or extend several feet along the lane; patches on patches are common.
Travel is Impaired	Holes in pavement are large and/or pavement has so many layers of patches that the section can be traveled only at reduced speed.
Impossible	Travel by ordinary car would risk damage to the vehicle.

Notes: - Ratings in blue are the definitions from the original Pavement Rating Manual c.1981.

- "Very Slight" from the original Manual = "Slight" here.

- "Slight" from the original Manual = "Minor" here.

## MEMORANDUM

**Date:** September 13, 2022  
**To:** Municipal Public Works or Highway Officials  
**From:** Scott Reigle, Senior Transportation Planner II - BMTS  
**RE:** 2022 Pavement Sufficiency Ratings

---

The 2022 Pavement Sufficiency Ratings for non-State Federal Aid System have been completed. We are distributing, to each Municipal Public Works or Highway Official, lists of the road segments that were rated Poor (Score=1-5) or Fair (Score=6). These lists are organized according to the road segment's Highway Functional Classification (C=Collector & MA=Minor Arterial). The scores indicate the surface condition of the roads as of August 4, 2022.

Pavement Sufficiency Ratings are performed annually by BMTS. The purpose of rating road pavement is for BMTS to gain an understanding of the Binghamton urban area road conditions. In addition, given the limited Federal funds that are available, we hope this information is helpful to each municipality in developing their work programs.

Please contact me at 778-2443 or [scott.reigle@broomecountyny.gov](mailto:scott.reigle@broomecountyny.gov) if you have any questions.

Regards,



Scott Reigle  
Senior Transportation Planner II

Attachments



# 2022 PAVEMENT SUFFICIENCY RATINGS

CITY OF BINGHAMTON  
MINOR ARTERIALS RATED FAIR

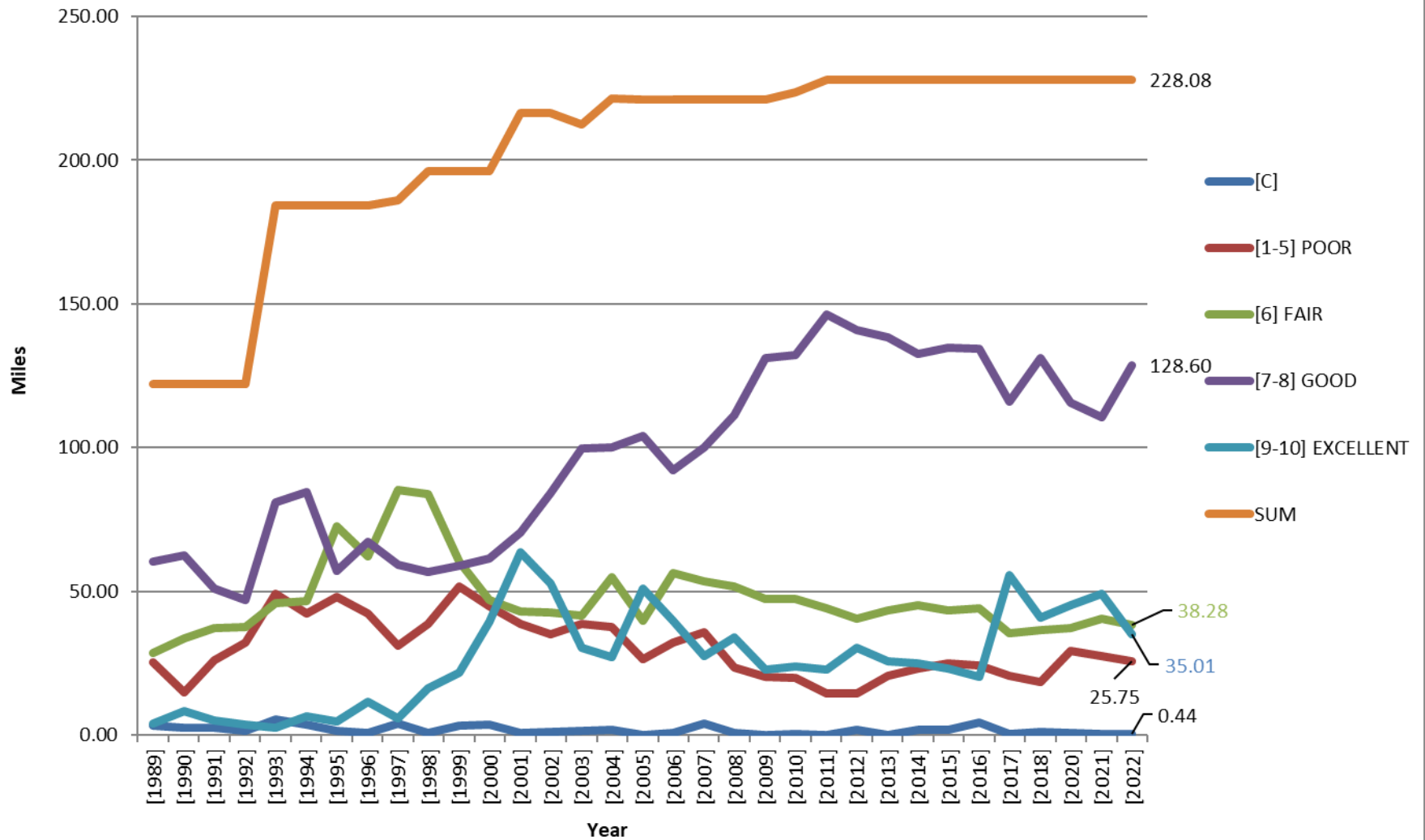
2022							
ROAD NAME	ROAD SEGMENT	MUN	CL	LANES	LENGTH	SCORE	COMMENTS
CONKLIN AVE	EXCHANGE ST-HIGH ST	CB	MA	2	0.1	6	
	HIGH ST-TELEGRAPH ST	CB	MA	2	0.22	6	
	TELEGRAPH ST-JOHN ST	CB	MA	2	0.09	6	Bike lane from Alfred to Tompkins.
FRONT ST	LEROY ST-RIVERSIDE DR	CB	MA	2	0.14	6	
	MAIN ST-LEROY ST	CB	MA	2	0.28	6	
STATE ST	COURT ST-HENRY ST	CB	MA	4	0.13	6	2020 City Project
	LEWIS ST-WEST STATE ST	CB	MA	2	0.34	6	2020 City Project. Road diet. 4 at Lewis to RR/Eldredge, then 7

Total Segments: 7  
Total Miles: 1.3



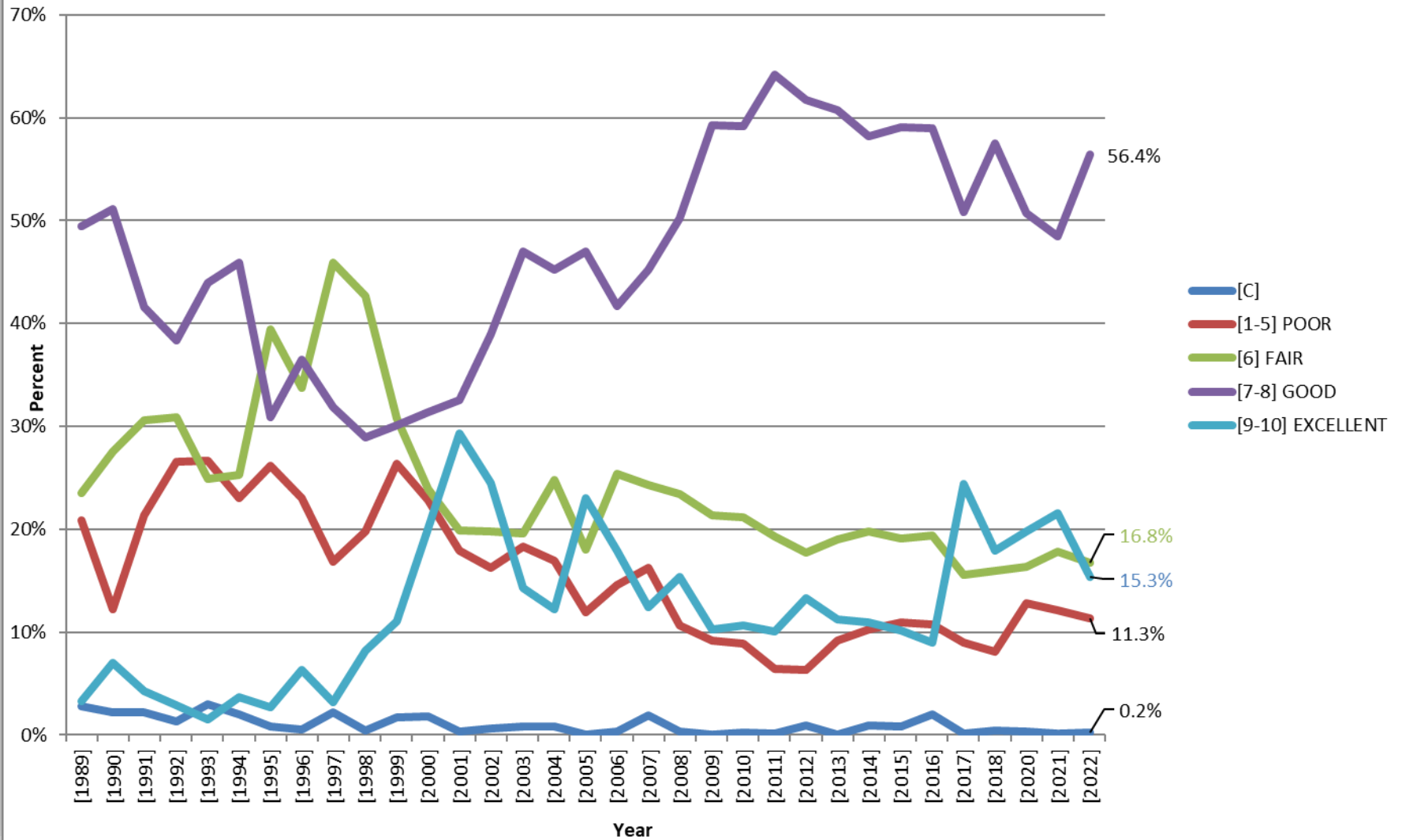


## Total Mileage for ALL Road Segments





## Percent Mileage for ALL Road Segments





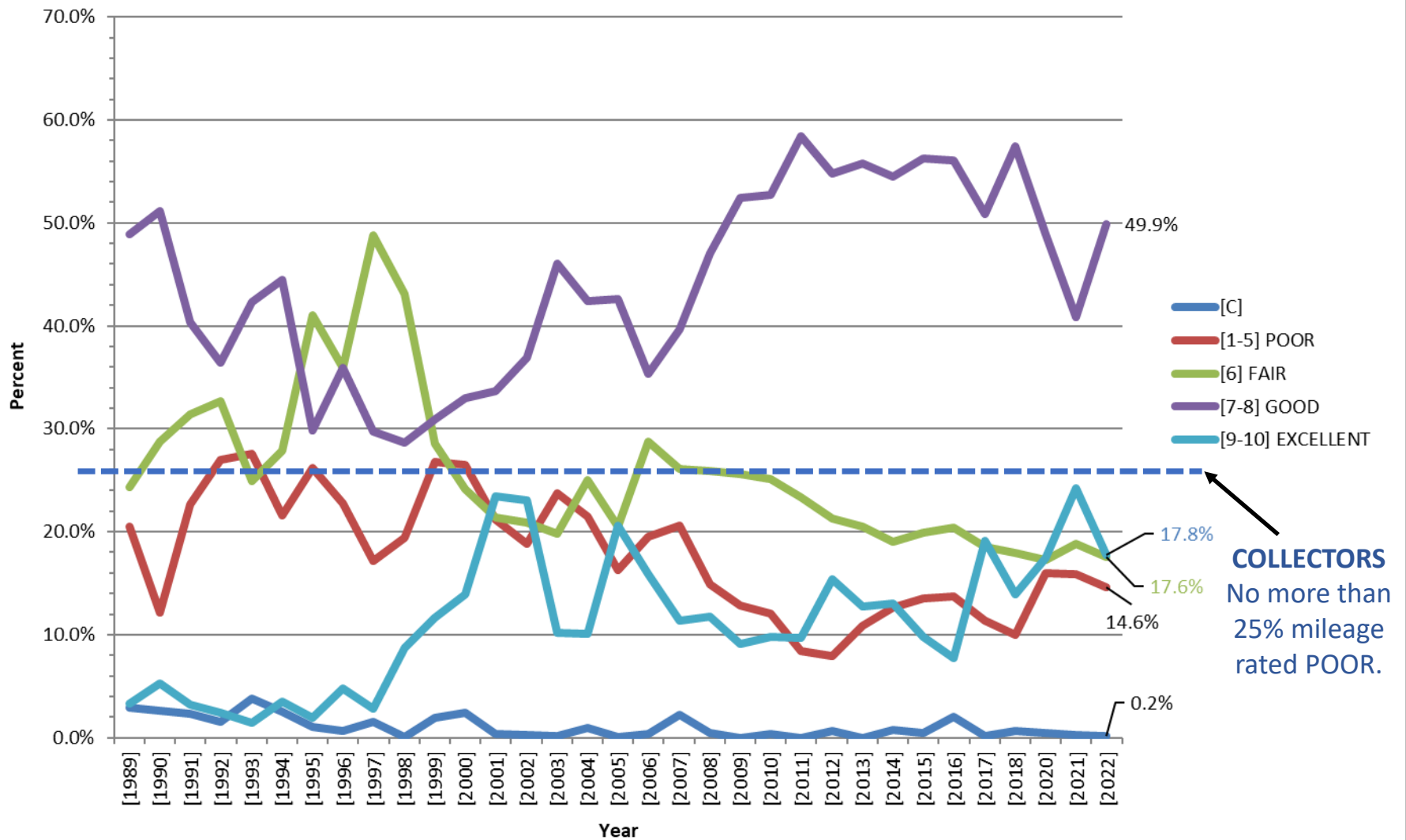
# BMTS – Pavement Condition Performance Level Commitments

1. Maintain collector street pavement sufficiency at **no more than 25% poor.**
2. Maintain minor arterial street pavement sufficiency at **no more than 10% poor.**

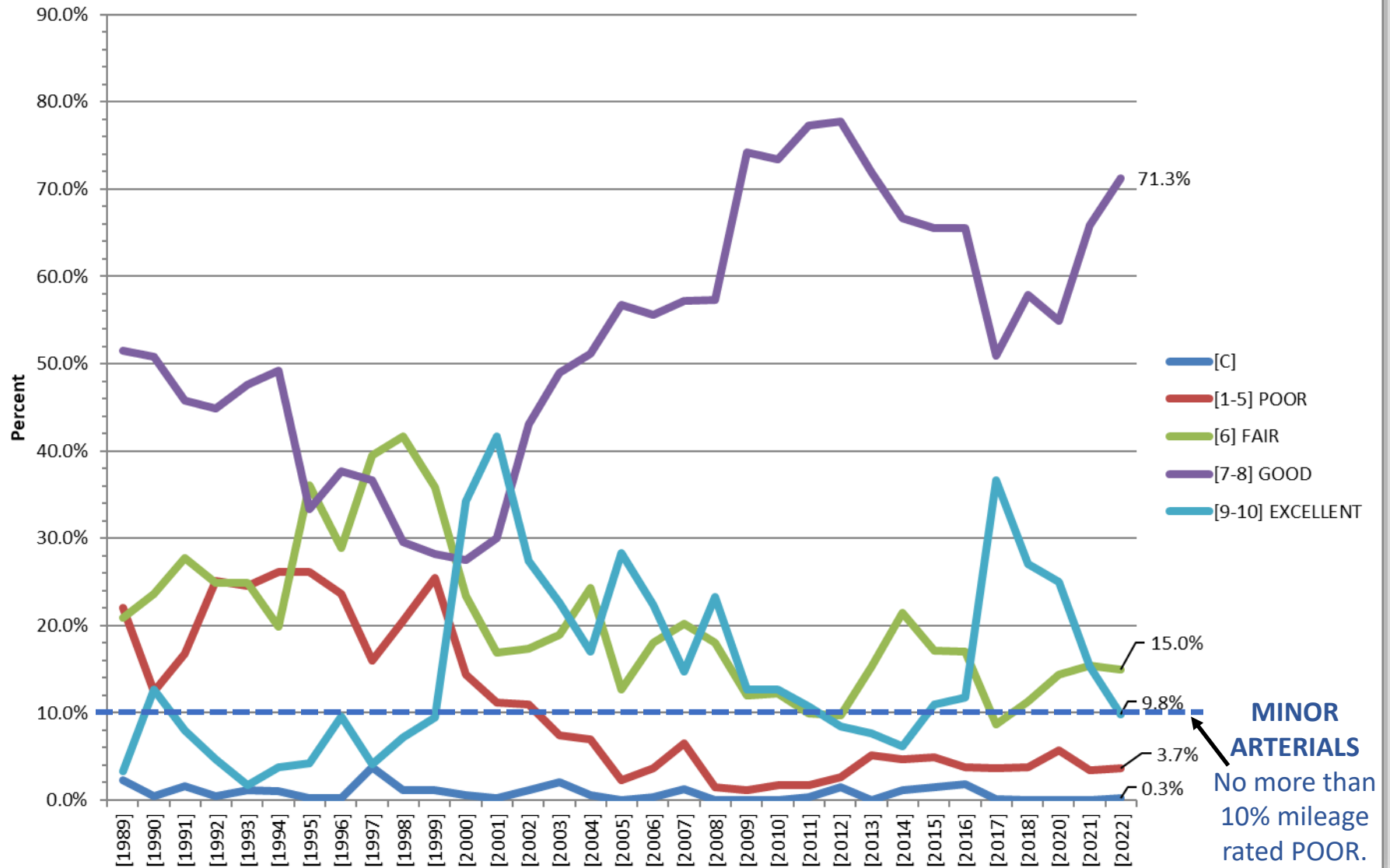




## Percent Mileage for COLLECTOR Road Segments



## Percent Mileage for MINOR ARTERIAL Road Segments





**BMTS PAVEMENT SUFFICIENCY RATINGS (2022)**  
**ANALYSIS FOR EACH MUNICIPALITY**

**TOTAL MILEAGE FOR EACH RATING CLASSIFICATION**

		[C] CONSTRUCTION	[1-5] POOR	[6] FAIR	[7-8] GOOD	[9-10] EXCELLENT	SUM
Broome County*	BCo	0.00	1.95	13.52	69.53	15.78	100.78
City of Binghamton**	CB	0.18	4.05	6.36	13.12	9.54	33.25
Town of Binghamton	TB	0.00	0.00	1.27	1.57	0.15	2.99
Town of Chenango	TCh	0.00	0.00	1.25	0.00	0.00	1.25
Town of Dickinson	TD	0.00	0.00	0.00	0.11	0.06	0.17
Town of Fenton	TF	0.00	0.00	0.29	3.45	0.00	3.74
Town of Kirkwood	TK	0.00	0.00	0.88	0.54	0.24	1.66
Town of Union	TU	0.00	0.55	0.87	10.18	1.79	13.39
Town of Vestal	TV	0.00	4.75	6.65	4.14	1.63	17.17
Village of Endicott	VE	0.26	5.76	0.59	1.70	1.55	9.86
Village of Johnson City	VJC	0.00	5.80	0.69	2.65	1.61	10.75
Village of Port Dickinson	VPD	0.00	0.09	0.00	0.35	0.20	0.64
Tioga County	TCo	0.00	2.77	4.72	12.03	0.00	19.52
Town of Owego	TO	0.00	0.00	0.00	6.15	1.48	7.63
Town of Tioga	TT	0.00	0.00	0.00	0.27	0.00	0.27
Village of Owego	VO	0.00	0.03	1.19	2.81	0.98	5.01
TOTALS		0.44	25.75	38.28	128.60	35.01	228.08



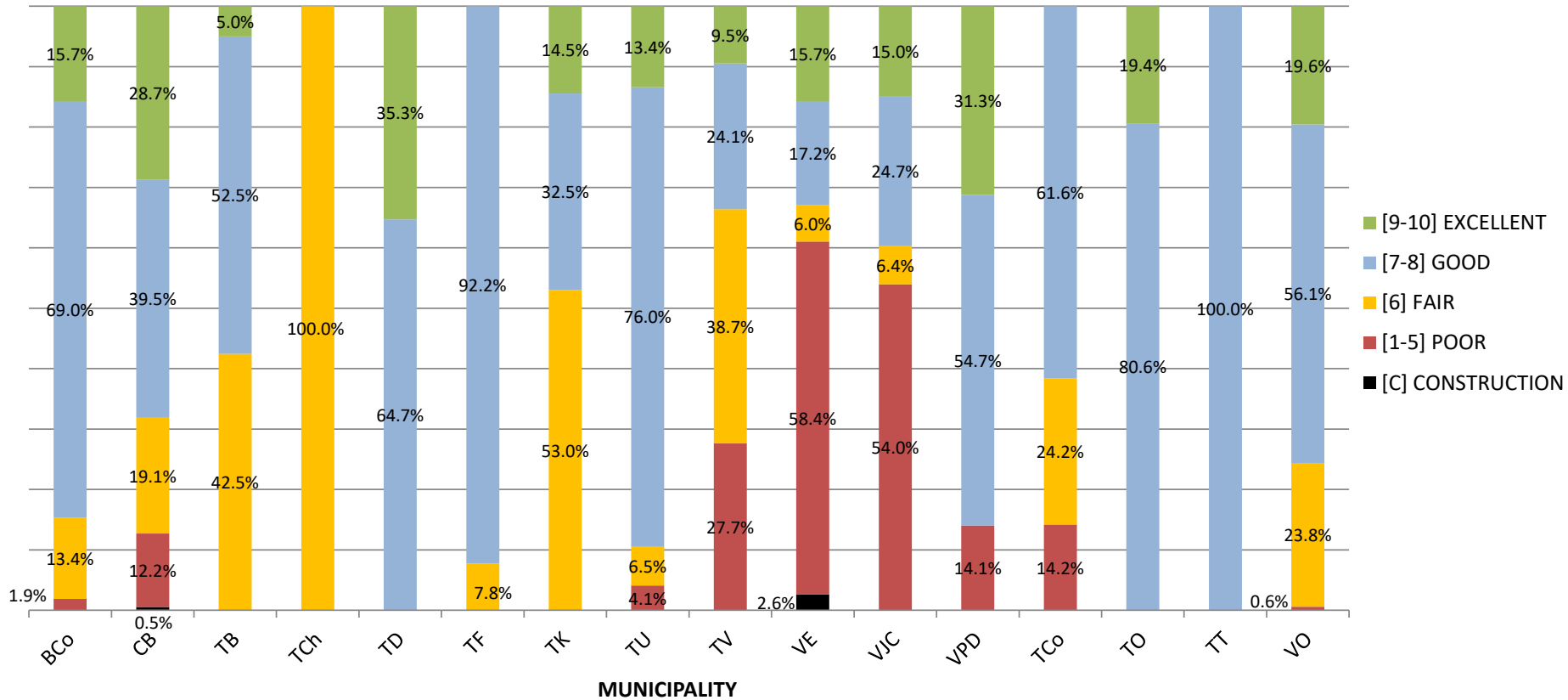
**BMTS PAVEMENT SUFFICIENCY RATINGS (2022)**  
**ANALYSIS FOR EACH MUNICIPALITY**

**PERCENT MILEAGE FOR EACH RATING CLASSIFICATION \***

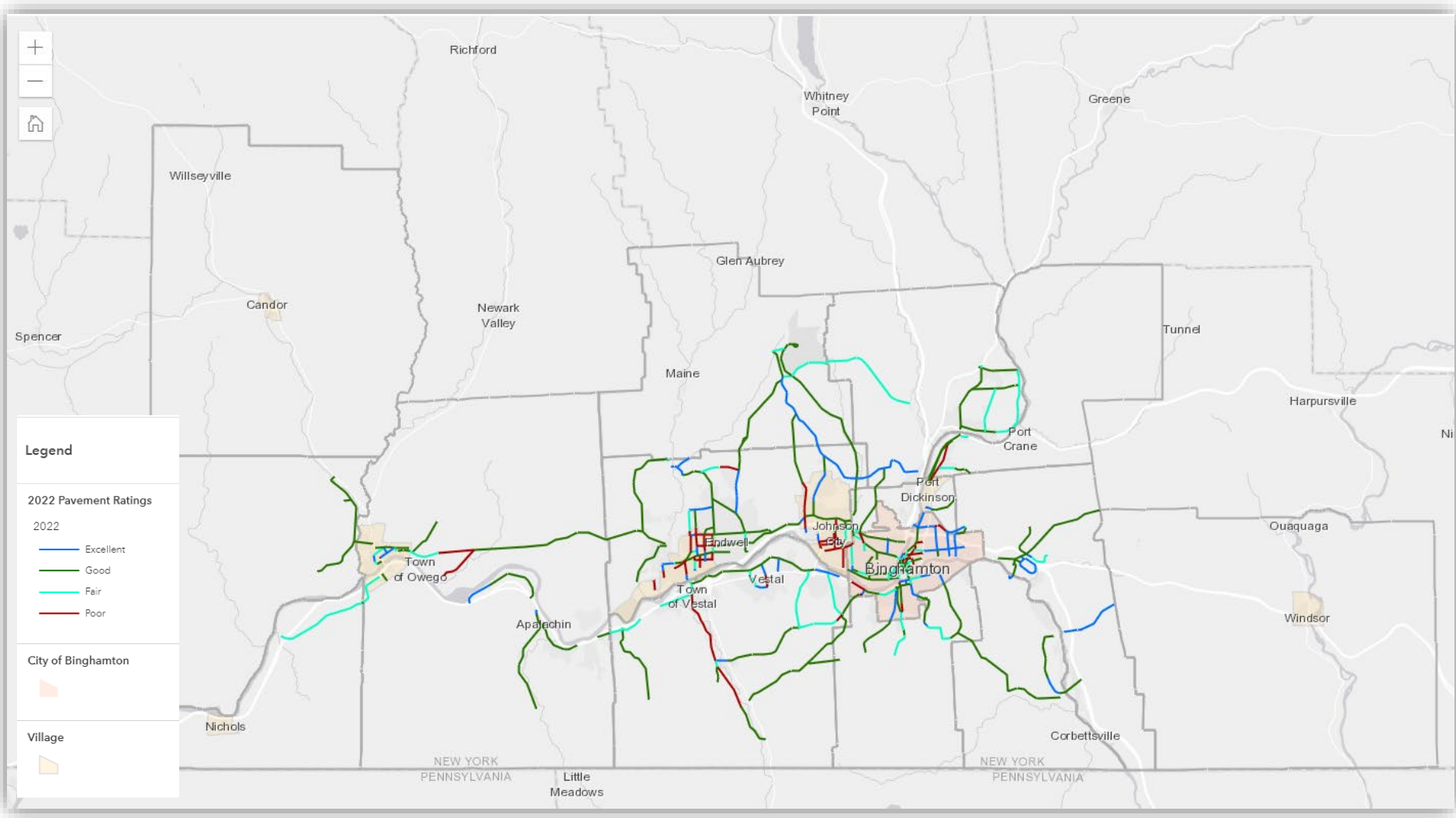
		[C] CONSTRUCTION	[1-5] POOR	[6] FAIR	[7-8] GOOD	[9-10] EXCELLENT
Broome County	BCo	0.0%	1.9%	13.4%	69.0%	15.7%
City of Binghamton	CB	0.5%	12.2%	19.1%	39.5%	28.7%
Town of Binghamton	TB	0.0%	0.0%	42.5%	52.5%	5.0%
Town of Chenango	TCh	0.0%	0.0%	100.0%	0.0%	0.0%
Town of Dickinson	TD	0.0%	0.0%	0.0%	64.7%	35.3%
Town of Fenton	TF	0.0%	0.0%	7.8%	92.2%	0.0%
Town of Kirkwood	TK	0.0%	0.0%	53.0%	32.5%	14.5%
Town of Union	TU	0.0%	4.1%	6.5%	76.0%	13.4%
Town of Vestal	TV	0.0%	27.7%	38.7%	24.1%	9.5%
Village of Endicott	VE	2.6%	58.4%	6.0%	17.2%	15.7%
Village of Johnson City	VJC	0.0%	54.0%	6.4%	24.7%	15.0%
Village of Port Dickinson	VPD	0.0%	14.1%	0.0%	54.7%	31.3%
Tioga County	TCo	0.0%	14.2%	24.2%	61.6%	0.0%
Town of Owego	TO	0.0%	0.0%	0.0%	80.6%	19.4%
Town of Tioga	TT	0.0%	0.0%	0.0%	100.0%	0.0%
Village of Owego	VO	0.0%	0.6%	23.8%	56.1%	19.6%
<b>ALL</b>		<b>0.2%</b>	<b>11.3%</b>	<b>16.8%</b>	<b>56.4%</b>	<b>15.3%</b>



## PERCENT MILEAGE FOR EACH RATING CLASSIFICATION BY MUNICIPALITY



# 2022 Pavement Ratings for Local Federal Aid Roads





# Pavement Condition Information Available Online



## TRAIL RATINGS

2021 Two Rivers Greenway Trail Maintenance Report

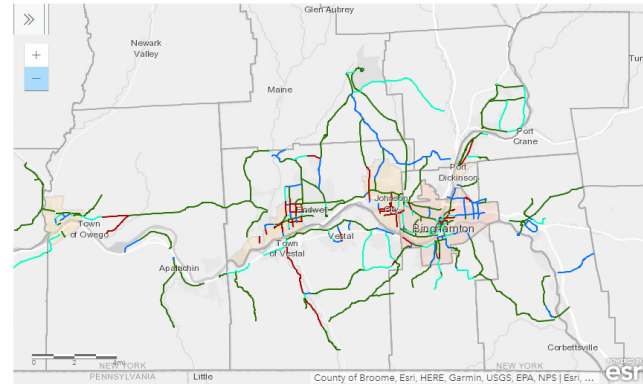
[2021 Two Rivers Greenway Trail Maintenance Report - 2021 Update](#)

[Interactive Map](#) 

## PAVEMENT RATINGS

2022 Pavement Condition Rating for Non-State Federal Aid Eligible Roadways

[Interactive Map](#) 



## Links to Reports

- [Pavement Conditions Report](#)
- [Roadway Segments](#)
- [Sidewalk Inventory Supplement](#)

Jennifer Yonkoski, PTP  
EXECUTIVE DIRECTOR

Edwin L. Crawford County Office Building  
Fifth Floor  
60 Hawley Street  
PO Box 1766  
Binghamton, NY 13902  
PHONE: 607.778.2443  
FAX: 607.778.2175  
EMAIL: [BMTS@BroomeCounty.US](mailto:BMTS@BroomeCounty.US)



- [Data and Maps](#)
- [Traffic Counts](#)
- [Bicyclist and Pedestrian Counts](#)
- [Trail & Pavement Ratings](#)
- [Maps](#)
- [Request Data](#)

<https://bmtsonline.com/data/pavement-ratings>