

Pavement Condition Rating Summary 2023

Non-State Federal Aid Eligible Roadways
(as of August 23, September 18-22)





5
Poor

Frequent

Moderate
to
Severe



5
Poor

Frequent

Moderate
to
Severe

Asphalt

F-14



6
Fair

Frequent

Moderate



6
Fair

Frequent

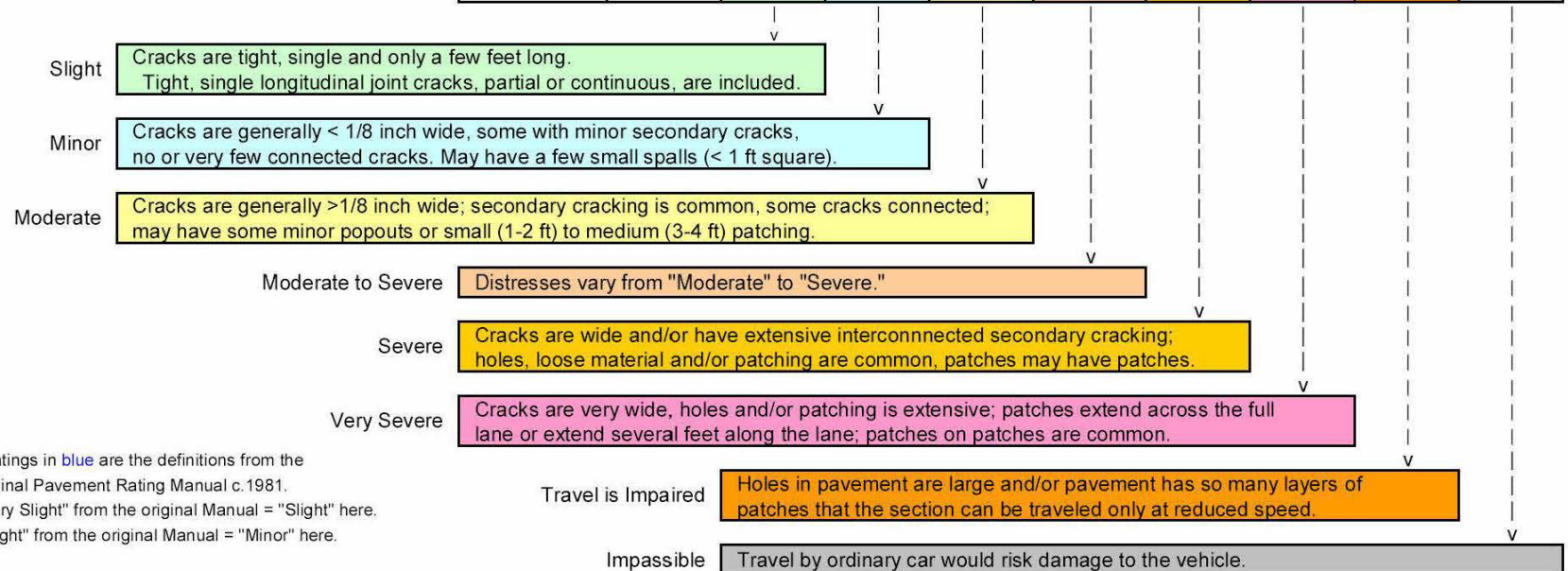
Moderate

F-13

Asphalt

Pavement Surface Rating Based on Frequency and Severity Descriptions

FREQUENCY		SEVERITY								
		None	Slight	Minor	Moderate	Moderate to Severe	Severe	Very Severe	Travel is Impaired	Impas-ible
No distress is present. A single random defect per 0.10 mile is allowed.	None	10 / 9	9	-	-	-	-	-	-	-
Most of the pavement is free of distress. One or two cracks or distresses are visible for the next 0.10 mile.	Infrequent	-	8	8	8	7	7	-	-	-
Much of the pavement is free of cracking. Large blocks of distress-free pavement are present.	Infrequent to Occasional	-	8	7	7	7	6	6	-	-
Much (<1/2) to most (>1/2) of the pavement is cracked. Uncracked or undistressed blocks of pavement range from 20-30 ft per lane to 12 ft per lane.	Occasional to Frequent	-	7	7	6	6	5	5	-	-
Nearly all the pavement is cracked. Uncracked or undistressed blocks of pavement are 12 ft square or less	Frequent	-	7	6	6	5	4	3	2	1
Mostly cracked. Cracks or distress are continuous and spaced only a few feet apart.	Very Frequent	-	6	6	5	5	4	3	2	1



Notes: - Ratings in blue are the definitions from the original Pavement Rating Manual c.1981.
 - "Very Slight" from the original Manual = "Slight" here.
 - "Slight" from the original Manual = "Minor" here.

MEMORANDUM

Date: October 10, 2023
To: Municipal Public Works or Highway Officials
From: Scott Reigle, Senior Transportation Planner II - BMTS
RE: 2023 Pavement Sufficiency Ratings

The 2023 Pavement Sufficiency Ratings for non-State Federal Aid System have been completed. We are distributing, to each Municipal Public Works or Highway Official, lists of the road segments that were rated Poor (Score=1-5) or Fair (Score=6). These lists are organized according to the road segment's Highway Functional Classification (C=Collector & MA=Minor Arterial). The scores indicate the surface condition of the roads recorded during the period of August 23, September 18-20 & 22, 2023.

Pavement Sufficiency Ratings are performed annually by BMTS. The purpose of rating road pavement is for BMTS to gain an understanding of the Binghamton urban area road conditions. In addition, given the limited Federal funds that are available, we hope this information is helpful to each municipality in developing their roadwork programs.

Please contact me at 778-2443 or scott.reigle@broomecountyny.gov if you have any questions.

Regards,



Scott Reigle
Senior Transportation Planner II

Attachments

2023 PAVEMENT SUFFICIENCY RATINGS

TOWN OF UNION
COLLECTORS RATED FAIR

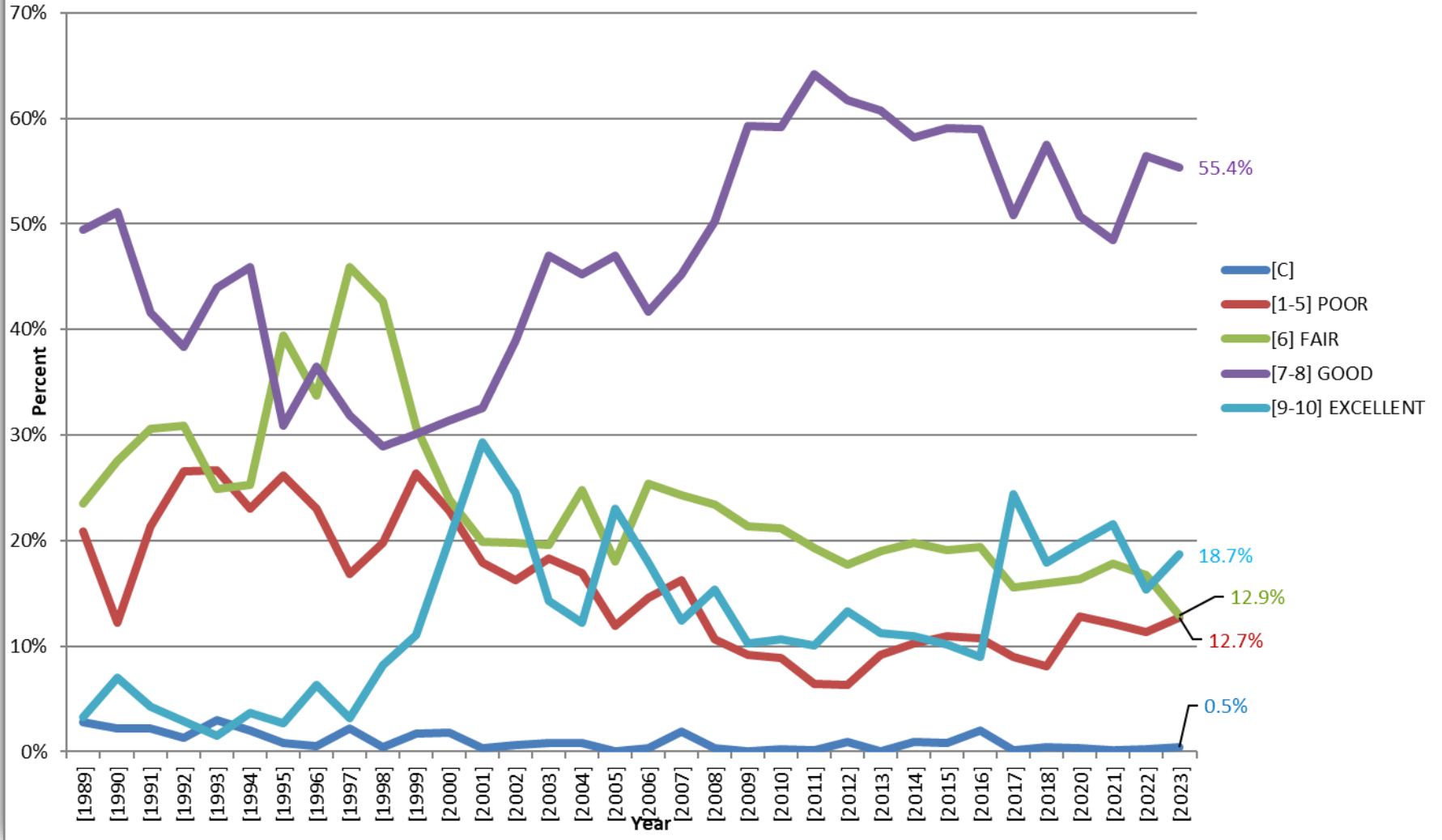
ROAD NAME	ROAD SEGMENT	2023						COMMENTS
		MUN	CL	LANES	LENGTH	SCORE		
HAYES AVE	NORTH ST-"VE LINE"	TU	C	2	0.18	6		
NEWELL RD	PINE ST-TAFT AVE	TU	C	2	0.47	6		
PRESCOTT AVE	BUFFALO ST-"TU LINE"	TU	C	2	0.69	6	4 Buffalo to Marjorie. 7 Marjorie to 1/2 way.	

Total Segments: 3

Total Miles: 1.34



Percent Mileage for ALL Road Segments



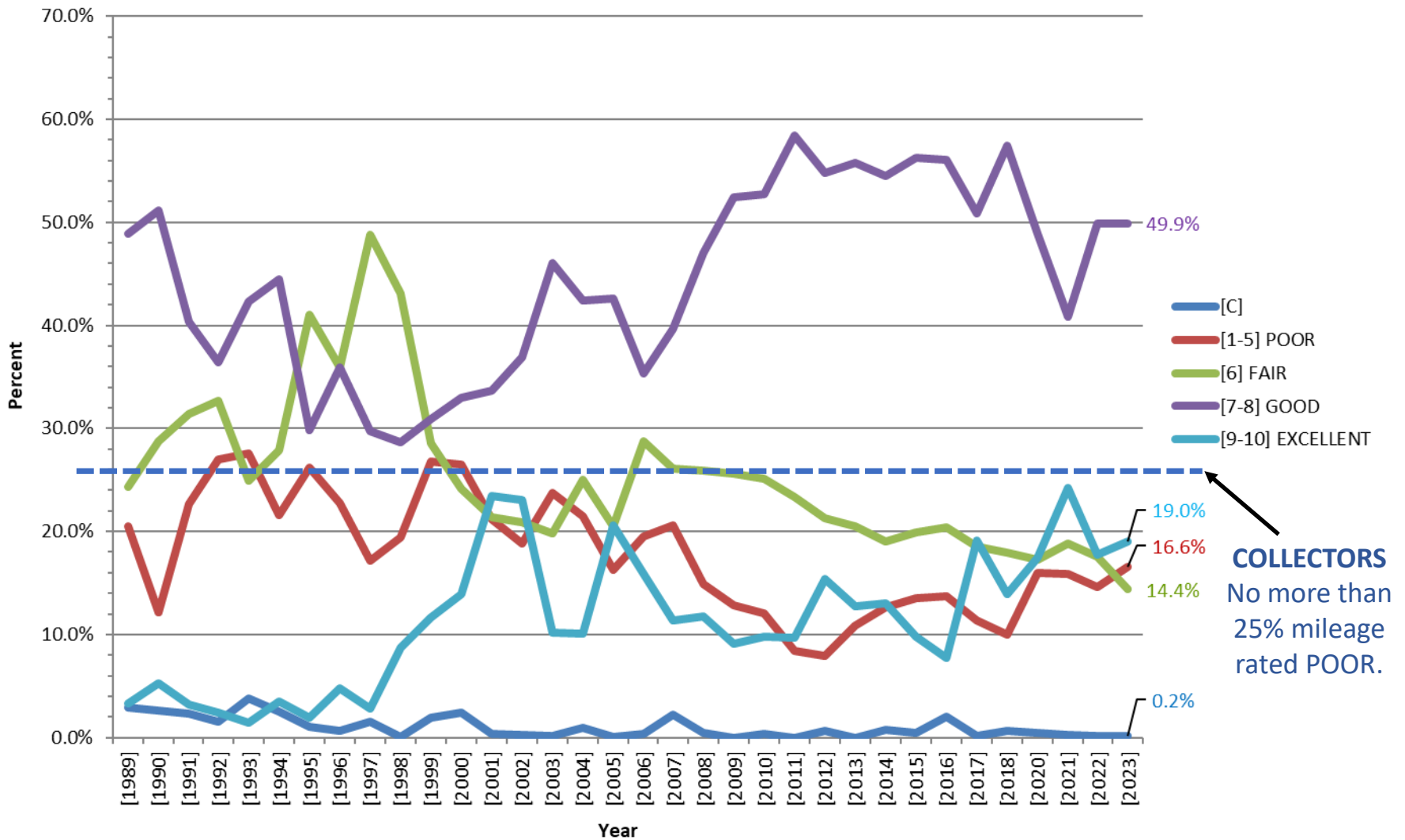


BMTS – Pavement Condition Performance Level Commitments

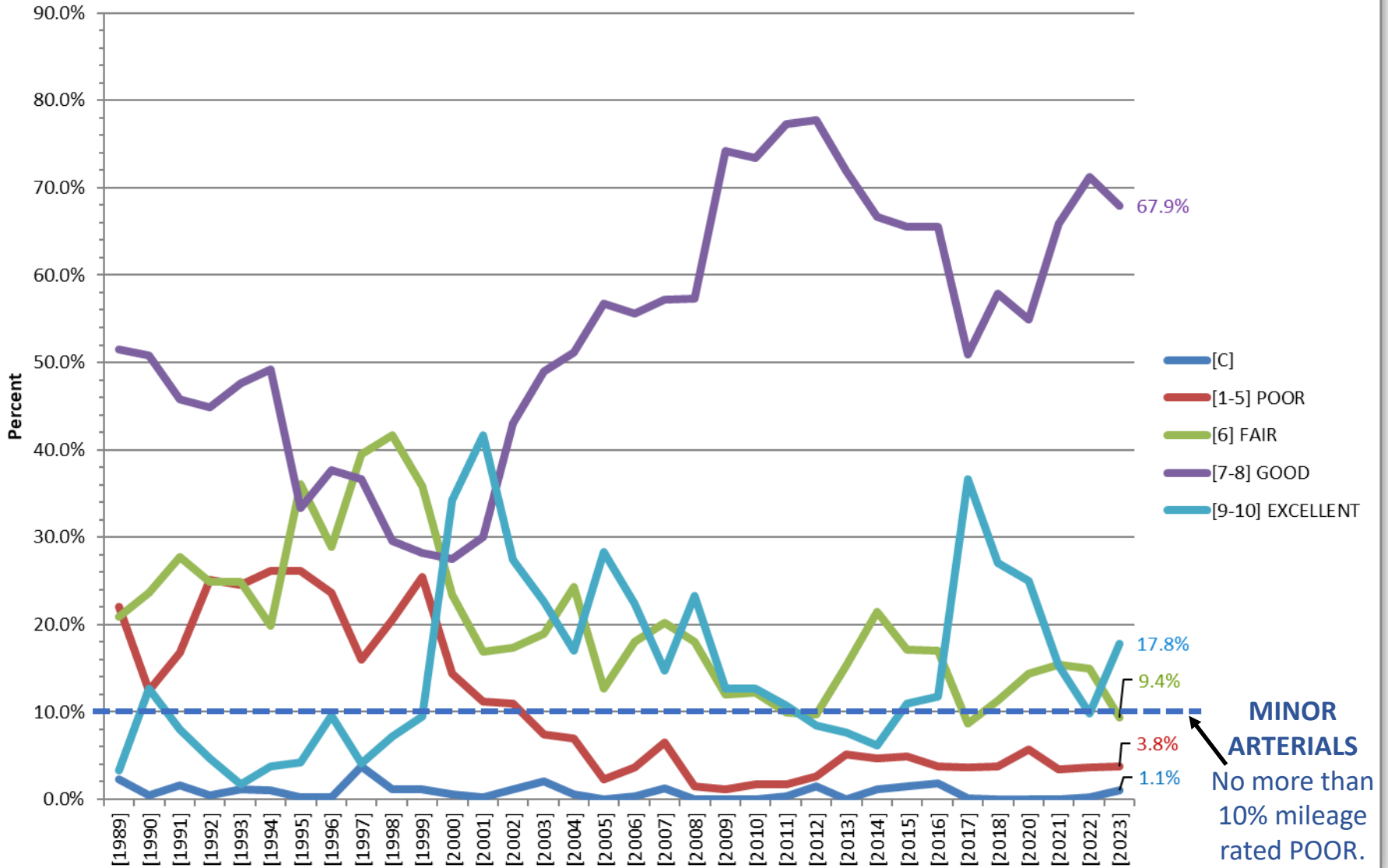
1. Maintain collector street pavement sufficiency at **no more than 25% poor.**
2. Maintain minor arterial street pavement sufficiency at **no more than 10% poor.**



Percent Mileage for COLLECTOR Road Segments



Percent Mileage for MINOR ARTERIAL Road Segments



**BMTS PAVEMENT SUFFICIENCY RATINGS (2023)
ANALYSIS FOR EACH MUNICIPALITY**

**TOTAL MILEAGE
FOR EACH RATING CLASSIFICATION**

		[C] CONSTRUCTION	[1-5] POOR	[6] FAIR	[7-8] GOOD	[9-10] EXCELLENT	SUM
Broome County*	BCo	0.74	0.25	7.76	70.73	21.30	100.78
City of Binghamton**	CB	0.00	4.88	6.92	11.09	10.36	33.25
Town of Binghamton	TB	0.00	0.00	0.00	1.17	1.82	2.99
Town of Chenango	TCh	0.00	0.00	1.25	0.00	0.00	1.25
Town of Dickinson	TD	0.00	0.00	0.11	0.00	0.06	0.17
Town of Fenton	TF	0.00	0.00	0.26	3.45	0.03	3.74
Town of Kirkwood	TK	0.00	0.88	0.43	0.11	0.24	1.66
Town of Union	TU	0.00	0.55	1.34	9.90	1.60	13.39
Town of Vestal	TV	0.00	8.72	2.47	4.05	1.93	17.17
Village of Endicott	VE	0.00	5.79	0.32	2.68	1.07	9.86
Village of Johnson City	VJC	0.31	4.33	2.11	2.39	1.61	10.75
Village of Port Dickinson	VPD	0.00	0.00	0.00	0.50	0.14	0.64
Tioga County	TCo	0.00	2.99	5.80	10.73	0.00	19.52
Town of Owego	TO	0.00	0.00	0.00	5.83	1.80	7.63
Town of Tioga	TT	0.00	0.00	0.00	0.27	0.00	0.27
Village of Owego	VO	0.00	0.50	0.57	3.35	0.59	5.01
TOTALS		1.05	28.89	29.34	126.25	42.55	228.08

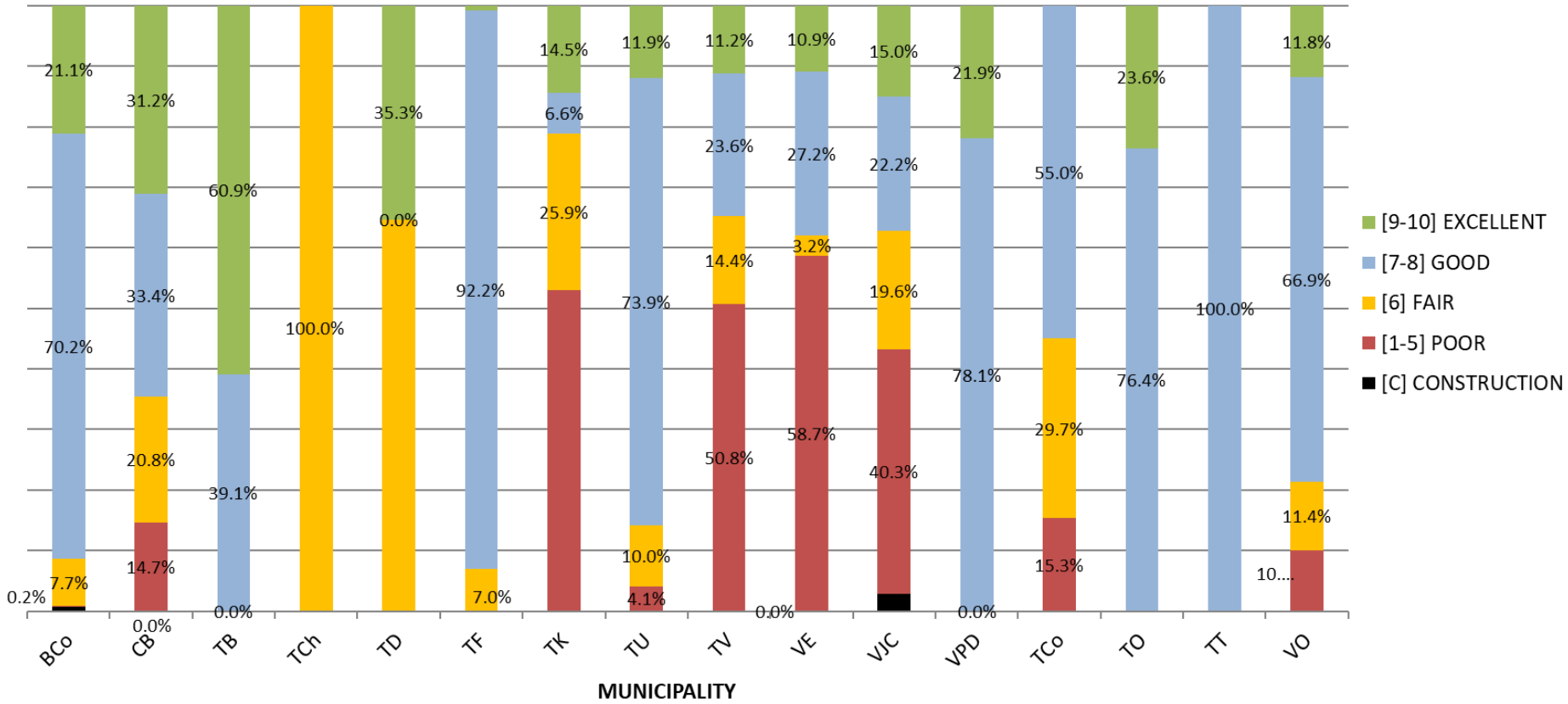
BMTS PAVEMENT SUFFICIENCY RATINGS (2023)

ANALYSIS FOR EACH MUNICIPALITY

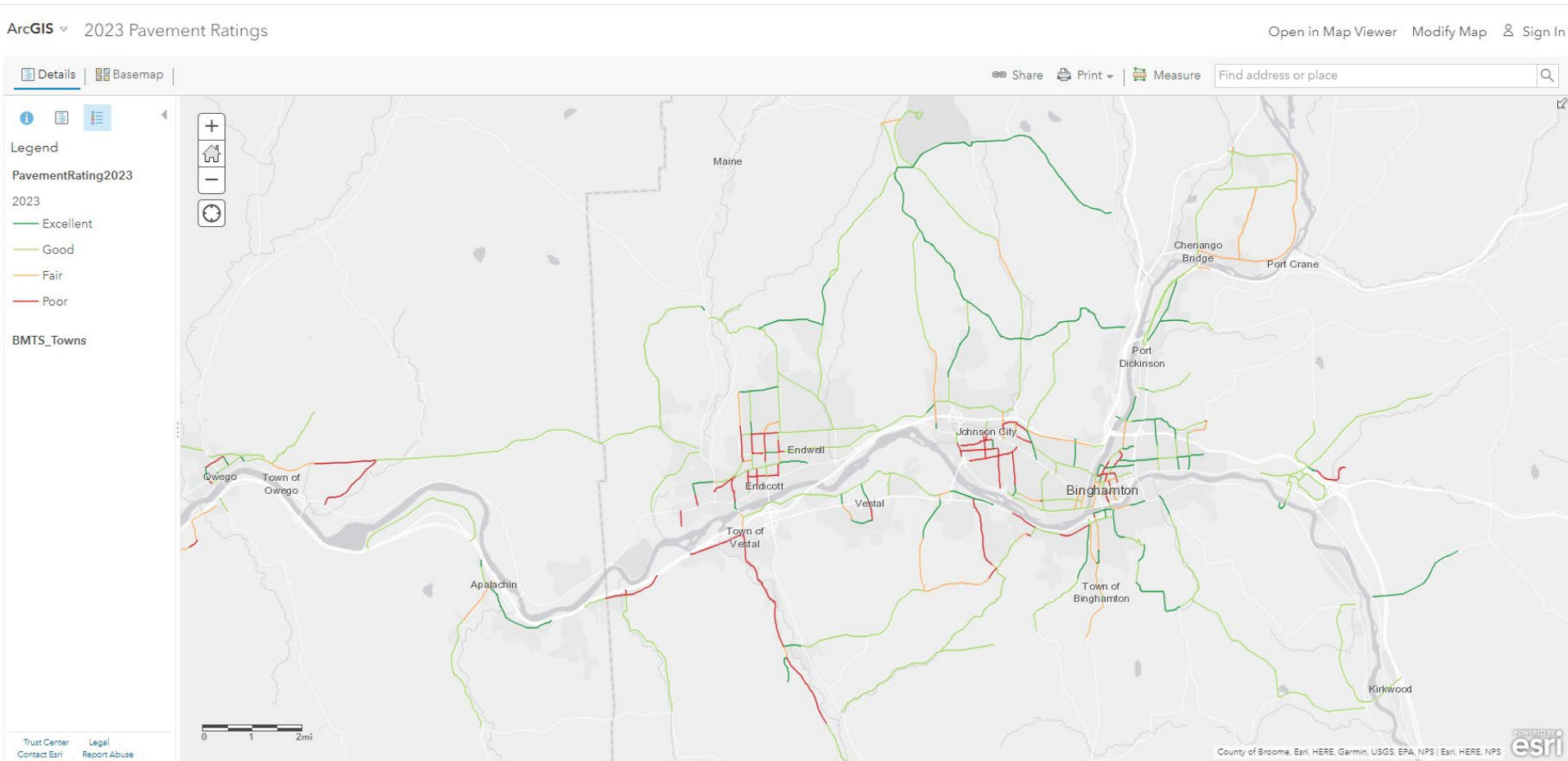
PERCENT MILEAGE FOR EACH RATING CLASSIFICATION *

		[C] CONSTRUCTION	[1-5] POOR	[6] FAIR	[7-8] GOOD	[9-10] EXCELLENT
Broome County	BCo	0.7%	0.2%	7.7%	70.2%	21.1%
City of Binghamton	CB	0.0%	14.7%	20.8%	33.4%	31.2%
Town of Binghamton	TB	0.0%	0.0%	0.0%	39.1%	60.9%
Town of Chenango	TCh	0.0%	0.0%	100.0%	0.0%	0.0%
Town of Dickinson	TD	0.0%	0.0%	64.7%	0.0%	35.3%
Town of Fenton	TF	0.0%	0.0%	7.0%	92.2%	0.8%
Town of Kirkwood	TK	0.0%	53.0%	25.9%	6.6%	14.5%
Town of Union	TU	0.0%	4.1%	10.0%	73.9%	11.9%
Town of Vestal	TV	0.0%	50.8%	14.4%	23.6%	11.2%
Village of Endicott	VE	0.0%	58.7%	3.2%	27.2%	10.9%
Village of Johnson City	VJC	2.9%	40.3%	19.6%	22.2%	15.0%
Village of Port Dickinson	VPD	0.0%	0.0%	0.0%	78.1%	21.9%
Tioga County	TCo	0.0%	15.3%	29.7%	55.0%	0.0%
Town of Owego	TO	0.0%	0.0%	0.0%	76.4%	23.6%
Town of Tioga	TT	0.0%	0.0%	0.0%	100.0%	0.0%
Village of Owego	VO	0.0%	10.0%	11.4%	66.9%	11.8%
	ALL	0.5%	12.7%	12.9%	55.4%	18.7%

PERCENT MILEAGE FOR EACH RATING CLASSIFICATION BY MUNICIPALITY



2023 Pavement Ratings for Local Federal Aid Roads

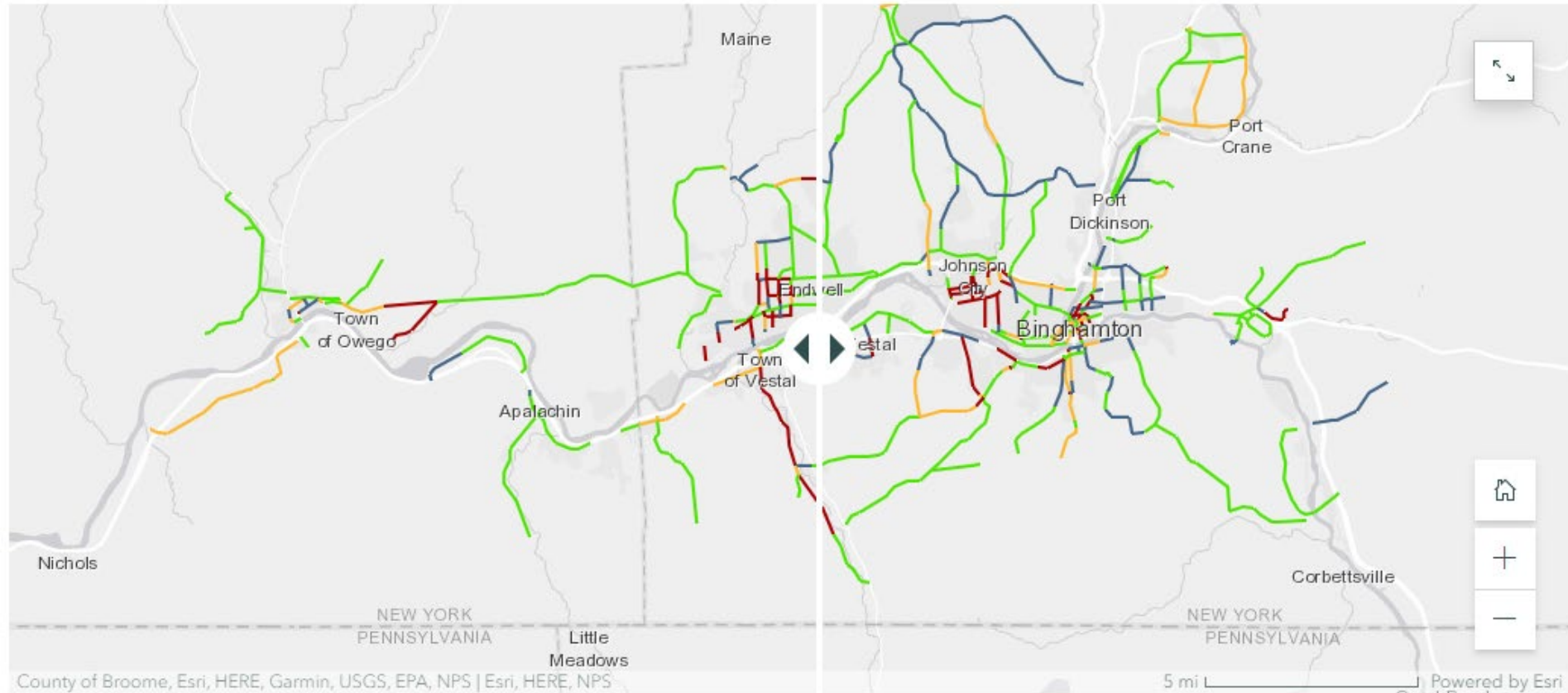


Pavement Condition Information Available Online

<https://bmtsonline.com/data/pavement-ratings>

BMTS Pavement Condition Ratings 2022 to 2023

A visual comparison of Non-Federal Aid Eligible Roadway Pavement Condition Ratings from 2022 to 2023



Slide the bar to the right to see 2022 conditions and to the left to see 2023 conditions.

Pavement Condition Information Available Online

<https://bmtsonline.com/data/pavement-ratings>