

COUNTS FOR ALL ROAD SEGMENTS

	[C]	[1-5] POOR	[6] FAIR	[7-8] GOOD	[9-10] EXCELLENT	SUM
[1989]	22	79	79	112	9	301
[1990]	16	52	91	128	14	301
[1991]	15	80	87	110	9	301
[1992]	11	91	87	104	8	301
[1993]	16	105	83	146	4	354
[1994]	11	96	81	149	16	353
[1995]	7	114	120	103	10	354
[1996]	7	94	114	116	23	354
[1997]	12	85	151	103	15	366
[1998]	5	96	128	112	42	383
[1999]	10	110	100	110	56	386
[2000]	10	106	82	118	70	386
[2001]	7	100	78	135	116	436
[2002]	6	98	70	163	99	436
[2003]	8	97	67	193	63	428
[2004]	4	88	96	190	63	441
[2005]	1	73	88	180	98	440
[2006]	4	92	97	168	79	440
[2007]	11	90	96	179	64	440
[2008]	3	65	93	192	87	440
[2009]	0	62	94	222	63	441
[2010]	2	54	102	233	57	448
[2011]	1	43	95	253	66	458
[2012]	3	40	87	262	66	458
[2013]	0	60	79	263	56	458
[2014]	3	58	77	259	61	458
[2015]	7	58	78	252	63	458
[2016]	5	60	82	254	57	458
[2017]	2	47	84	224	101	458
[2018]	3	50	87	237	81	458
[2020]	2	69	88	208	91	458
[2021]	1	70	90	196	101	458
[2022]	2	68	87	207	94	458
[2023]	3	82	63	208	102	458

NOTE: In 2001,2003, 2010, AND 2011 some roads were added and eliminated, and road classifications changed.
**** 2004 - 2011 DOES NOT** include two segments of the Endicott/Vestal Bridge, which are not rated. No 2019 ratings.

PERCENTAGES FOR ALL ROAD SEGMENTS *

	[C]	[1-5] POOR	[6] FAIR	[7-8] GOOD	[9-10] EXCELLENT
[1989]	7.3%	26.2%	26.2%	37.2%	3.0%
[1990]	5.3%	17.3%	30.2%	42.5%	4.7%
[1991]	5.0%	26.6%	28.9%	36.5%	3.0%
[1992]	3.7%	30.2%	28.9%	34.6%	2.7%
[1993]	4.5%	29.7%	23.4%	41.2%	1.1%
[1994]	3.1%	27.2%	22.9%	42.2%	4.5%
[1995]	2.0%	32.2%	33.9%	29.1%	2.8%
[1996]	2.0%	26.6%	32.2%	32.8%	6.5%
[1997]	3.3%	23.2%	41.3%	28.1%	4.1%
[1998]	1.3%	25.1%	33.4%	29.2%	11.0%
[1999]	2.6%	28.5%	25.9%	28.5%	14.5%
[2000]	2.6%	27.5%	21.2%	30.6%	18.1%
[2001]	1.6%	22.9%	17.9%	31.0%	26.6%
[2002]	1.4%	22.5%	16.1%	37.4%	22.7%
[2003]	1.9%	22.7%	15.7%	45.1%	14.7%
[2004]	0.9%	20.0%	21.8%	43.1%	14.3%
[2005]	0.2%	16.6%	20.0%	40.9%	22.3%
[2006]	0.9%	20.9%	22.0%	38.2%	18.0%
[2007]	2.5%	20.5%	21.8%	40.7%	14.5%
[2008]	0.7%	14.8%	21.1%	43.6%	19.8%
[2009]	0.0%	14.1%	21.3%	50.3%	14.3%
[2010]	0.4%	12.1%	22.8%	52.0%	12.7%
[2011]	0.2%	9.4%	20.7%	55.2%	14.4%
[2012]	0.7%	8.7%	19.0%	57.2%	14.4%
[2013]	0.0%	13.1%	17.2%	57.4%	12.2%
[2014]	0.7%	12.7%	16.8%	56.6%	13.3%
[2015]	1.5%	12.7%	17.0%	55.0%	13.8%
[2016]	1.1%	13.1%	17.9%	55.5%	12.4%
[2017]	0.4%	10.3%	18.3%	48.9%	22.1%
[2018]	0.7%	10.9%	19.0%	51.7%	17.7%
[2020]	0.4%	15.1%	19.2%	45.4%	19.9%
[2021]	0.2%	15.3%	19.7%	42.8%	22.1%
[2022]	0.4%	14.8%	19.0%	45.2%	20.5%
[2023]	0.7%	17.9%	13.8%	45.4%	22.3%

MILEAGE FOR ALL ROAD SEGMENTS

	[C]	[1-5] POOR	[6] FAIR	[7-8] GOOD	[9-10] EXCELLENT	SUM
[1989]	3.40	25.47	28.77	60.43	4.05	122.12
[1990]	2.64	14.91	33.66	62.38	8.53	122.12
[1991]	2.66	26.04	37.33	50.83	5.26	122.12
[1992]	1.59	32.38	37.71	46.86	3.58	122.12
[1993]	5.48	49.02	45.89	81.02	2.78	184.19
[1994]	3.77	42.42	46.66	84.66	6.68	184.19
[1995]	1.44	48.25	72.62	56.97	4.91	184.19
[1996]	0.93	42.45	62.05	67.17	11.59	184.19
[1997]	4.11	31.26	85.40	59.41	5.99	186.17
[1998]	0.77	38.82	83.71	56.85	16.17	196.32
[1999]	3.34	51.80	60.41	59.12	21.65	196.32
[2000]	3.59	44.88	46.98	61.53	39.34	196.32
[2001]	0.67	38.83	43.12	70.40	63.56	216.58
[2002]	1.27	35.15	42.82	84.36	52.98	216.58
[2003]	1.68	38.88	41.56	99.90	30.42	212.44
[2004]	1.76	37.52	54.98	100.11	27.12	221.49
[2005]	0.03	26.29	39.95	103.98	50.98	221.23
[2006]	0.83	32.24	56.24	92.26	39.66	221.23
[2007]	4.21	35.86	53.69	99.95	27.52	221.23
[2008]	0.64	23.58	51.83	111.24	33.94	221.23
[2009]	0.00	20.19	47.26	131.07	22.71	221.23
[2010]	0.53	19.81	47.27	132.34	23.85	223.80
[2011]	0.21	14.60	44.02	146.38	22.87	228.08
[2012]	2.01	14.44	40.52	140.81	30.30	228.08
[2013]	0.00	20.82	43.24	138.45	25.57	228.08
[2014]	1.99	23.32	45.09	132.70	24.98	228.08
[2015]	1.82	24.87	43.50	134.77	23.12	228.08
[2016]	4.51	24.41	44.26	134.45	20.45	228.08
[2017]	0.31	20.56	35.51	116.04	55.66	228.08
[2018]	1.06	18.51	36.38	131.24	40.89	228.08
[2020]	0.67	29.31	37.33	115.72	45.05	228.08
[2021]	0.41	27.54	40.53	110.48	49.12	228.08
[2022]	0.44	25.75	38.28	128.60	35.01	228.08
[2023]	1.05	28.89	29.34	126.25	42.55	228.08

PERCENT MILEAGE FOR ALL ROAD SEGMENTS *

	[C]	[1-5] POOR	[6] FAIR	[7-8] GOOD	[9-10] EXCELLENT
[1989]	2.8%	20.9%	23.6%	49.5%	3.3%
[1990]	2.2%	12.2%	27.6%	51.1%	7.0%
[1991]	2.2%	21.3%	30.6%	41.6%	4.3%
[1992]	1.3%	26.5%	30.9%	38.4%	2.9%
[1993]	3.0%	26.6%	24.9%	44.0%	1.5%
[1994]	2.0%	23.0%	25.3%	46.0%	3.6%
[1995]	0.8%	26.2%	39.4%	30.9%	2.7%
[1996]	0.5%	23.0%	33.7%	36.5%	6.3%
[1997]	2.2%	16.8%	45.9%	31.9%	3.2%
[1998]	0.4%	19.8%	42.6%	29.0%	8.2%
[1999]	1.7%	26.4%	30.8%	30.1%	11.0%
[2000]	1.8%	22.9%	23.9%	31.3%	20.0%
[2001]	0.3%	17.9%	19.9%	32.5%	29.3%
[2002]	0.6%	16.2%	19.8%	39.0%	24.5%
[2003]	0.8%	18.3%	19.6%	47.0%	14.3%
[2004]	0.8%	16.9%	24.8%	45.2%	12.2%
[2005]	0.0%	11.9%	18.1%	47.0%	23.0%
[2006]	0.4%	14.6%	25.4%	41.7%	17.9%
[2007]	1.9%	16.2%	24.3%	45.2%	12.4%
[2008]	0.3%	10.7%	23.4%	50.3%	15.3%
[2009]	0.0%	9.1%	21.4%	59.2%	10.3%
[2010]	0.2%	8.9%	21.1%	59.1%	10.7%
[2011]	0.1%	6.4%	19.3%	64.2%	10.0%
[2012]	0.9%	6.3%	17.8%	61.7%	13.3%
[2013]	0.0%	9.1%	19.0%	60.7%	11.2%
[2014]	0.9%	10.2%	19.8%	58.2%	11.0%
[2015]	0.8%	10.9%	19.1%	59.1%	10.1%
[2016]	2.0%	10.7%	19.4%	58.9%	9.0%
[2017]	0.1%	9.0%	15.6%	50.9%	24.4%
[2018]	0.5%	8.1%	16.0%	57.5%	17.9%
[2020]	0.3%	12.9%	16.4%	50.7%	19.8%
[2021]	0.2%	12.1%	17.8%	48.4%	21.5%
[2022]	0.2%	11.3%	16.8%	56.4%	15.3%
[2023]	0.5%	12.7%	12.9%	55.4%	18.7%

COUNTS FOR COLLECTOR SEGMENTS

	[C]	[1-5] POOR	[6] FAIR	[7-8] GOOD	[9-10] EXCELLENT	SUM
[1989]	17	63	60	75	8	223
[1990]	14	38	73	90	8	223
[1991]	12	61	70	73	7	223
[1992]	9	69	66	76	3	223
[1993]	12	81	59	100	3	255
[1994]	6	75	58	104	11	254
[1995]	5	90	88	66	6	255
[1996]	5	71	87	75	17	255
[1997]	7	66	108	70	14	265
[1998]	1	74	91	80	36	282
[1999]	7	84	67	79	46	283
[2000]	7	83	56	93	44	283
[2001]	5	78	58	104	69	314
[2002]	2	75	50	114	73	314
[2003]	1	80	48	142	38	309
[2004]	3	75	70	140	33	321
[2005]	1	66	66	128	59	320
[2006]	3	76	78	110	53	320
[2007]	6	77	75	114	48	320
[2008]	3	58	75	125	59	320
[2009]	0	57	76	146	42	321
[2010]	2	49	81	158	38	328
[2011]	0	38	79	178	43	338
[2012]	2	34	71	182	49	338
[2013]	0	49	57	190	42	338
[2014]	1	47	56	187	47	338
[2015]	3	50	62	180	43	338
[2016]	3	53	65	184	33	338
[2017]	1	41	69	171	56	338
[2018]	3	43	69	180	43	338
[2020]	2	61	67	145	63	338
[2021]	1	60	73	125	79	338
[2022]	1	56	70	137	74	338
[2023]	1	72	49	139	77	338

PERCENTAGES FOR COLLECTOR SEGMENTS *

	[C]	[1-5] POOR	[6] FAIR	[7-8] GOOD	[9-10] EXCELLENT
[1989]	7.6%	28.3%	26.9%	33.6%	3.6%
[1990]	6.3%	17.0%	32.7%	40.4%	3.6%
[1991]	5.4%	27.4%	31.4%	32.7%	3.1%
[1992]	4.0%	30.9%	29.6%	34.1%	1.3%
[1993]	4.7%	31.8%	23.1%	39.2%	1.2%
[1994]	2.4%	29.5%	22.8%	40.9%	4.3%
[1995]	2.0%	35.3%	34.5%	25.9%	2.4%
[1996]	2.0%	27.8%	34.1%	29.4%	6.7%
[1997]	2.6%	24.9%	40.8%	26.4%	5.3%
[1998]	0.4%	26.2%	32.3%	28.4%	12.8%
[1999]	2.5%	29.7%	23.7%	27.9%	16.3%
[2000]	2.5%	29.3%	19.8%	32.9%	15.5%
[2001]	1.6%	24.8%	18.5%	33.1%	22.0%
[2002]	0.6%	23.9%	15.9%	36.3%	23.2%
[2003]	0.3%	25.9%	15.5%	46.0%	12.3%
[2004]	0.9%	23.4%	21.8%	43.6%	10.3%
[2005]	0.3%	20.6%	20.6%	40.0%	18.4%
[2006]	0.9%	23.8%	24.4%	34.4%	16.6%
[2007]	1.9%	24.1%	23.4%	35.6%	15.0%
[2008]	0.9%	18.1%	23.4%	39.1%	18.4%
[2009]	0.0%	17.8%	23.7%	45.5%	13.1%
[2010]	0.6%	14.9%	24.7%	48.2%	11.6%
[2011]	0.0%	11.2%	23.4%	52.7%	12.7%
[2012]	0.6%	10.1%	21.0%	53.8%	14.5%
[2013]	0.0%	14.5%	16.9%	56.2%	12.4%
[2014]	0.3%	13.9%	16.6%	55.3%	13.9%
[2015]	0.9%	14.8%	18.3%	53.3%	12.7%
[2016]	0.9%	15.7%	19.2%	54.4%	9.8%
[2017]	0.3%	12.1%	20.4%	50.6%	16.6%
[2018]	0.9%	12.7%	20.4%	53.3%	12.7%
[2020]	0.6%	18.0%	19.8%	42.9%	18.6%
[2021]	0.3%	17.8%	21.6%	37.0%	23.4%
[2022]	0.3%	16.6%	20.7%	40.5%	21.9%
[2023]	0.3%	21.3%	14.5%	41.1%	22.8%

MILEAGE FOR COLLECTOR SEGMENTS

	[C]	[1-5] POOR	[6] FAIR	[7-8] GOOD	[9-10] EXCELLENT	SUM
[1989]	2.76	19.25	22.90	45.93	3.11	93.95
[1990]	2.50	11.40	27.01	48.08	4.96	93.95
[1991]	2.21	21.31	29.51	37.92	3.00	93.95
[1992]	1.45	25.32	30.70	34.22	2.26	93.95
[1993]	4.80	34.51	31.19	52.91	1.75	125.16
[1994]	3.17	27.02	34.92	55.61	4.44	125.16
[1995]	1.30	32.82	51.33	37.29	2.42	125.16
[1996]	0.79	28.51	44.98	44.94	5.94	125.16
[1997]	1.93	21.86	62.26	37.90	3.59	127.54
[1998]	0.12	26.72	59.18	39.44	11.95	137.41
[1999]	2.69	36.83	39.26	42.54	16.09	137.41
[2000]	3.27	36.44	33.19	45.35	19.16	137.41
[2001]	0.53	30.95	31.20	49.20	34.21	146.09
[2002]	0.43	27.45	30.55	53.99	33.67	146.09
[2003]	0.23	33.71	28.24	65.52	14.54	142.24
[2004]	1.40	32.69	38.09	64.56	15.31	152.05
[2005]	0.03	24.70	31.14	64.69	31.37	151.93
[2006]	0.57	29.70	43.73	53.74	24.19	151.93
[2007]	3.34	31.33	39.66	60.28	17.32	151.93
[2008]	0.64	22.59	39.36	71.51	17.83	151.93
[2009]	0.00	19.44	38.97	79.62	13.90	151.93
[2010]	0.53	18.62	38.77	81.49	15.09	154.50
[2011]	0.00	13.41	37.11	92.81	15.45	158.78
[2012]	1.01	12.60	33.76	86.97	24.44	158.78
[2013]	0.00	17.26	32.62	88.61	20.29	158.78
[2014]	1.20	20.11	30.25	86.52	20.70	158.78
[2015]	0.80	21.44	31.67	89.34	15.53	158.78
[2016]	3.25	21.80	32.44	89.02	12.27	158.78
[2017]	0.21	18.05	29.47	80.75	30.30	158.78
[2018]	1.06	15.93	28.54	91.14	22.11	158.78
[2020]	0.67	25.36	27.33	77.67	27.75	158.78
[2021]	0.41	25.16	29.86	64.84	38.51	158.78
[2022]	0.26	23.21	27.90	79.22	28.19	158.78
[2023]	0.31	26.28	22.84	79.17	30.18	158.78

PERCENT MILEAGE FOR COLLECTOR SEGMENTS *

	[C]	[1-5] POOR	[6] FAIR	[7-8] GOOD	[9-10] EXCELLENT
[1989]	2.9%	20.5%	24.4%	48.9%	3.3%
[1990]	2.7%	12.1%	28.7%	51.2%	5.3%
[1991]	2.4%	22.7%	31.4%	40.4%	3.2%
[1992]	1.5%	27.0%	32.7%	36.4%	2.4%
[1993]	3.8%	27.6%	24.9%	42.3%	1.4%
[1994]	2.5%	21.6%	27.9%	44.4%	3.5%
[1995]	1.0%	26.2%	41.0%	29.8%	1.9%
[1996]	0.6%	22.8%	35.9%	35.9%	4.7%
[1997]	1.5%	17.1%	48.8%	29.7%	2.8%
[1998]	0.1%	19.4%	43.1%	28.7%	8.7%
[1999]	2.0%	26.8%	28.6%	31.0%	11.7%
[2000]	2.4%	26.5%	24.2%	33.0%	13.9%
[2001]	0.4%	21.2%	21.4%	33.7%	23.4%
[2002]	0.3%	18.8%	20.9%	37.0%	23.0%
[2003]	0.2%	23.7%	19.9%	46.1%	10.2%
[2004]	0.9%	21.5%	25.1%	42.5%	10.1%
[2005]	0.0%	16.3%	20.5%	42.6%	20.6%
[2006]	0.4%	19.5%	28.8%	35.4%	15.9%
[2007]	2.2%	20.6%	26.1%	39.7%	11.4%
[2008]	0.4%	14.9%	25.9%	47.1%	11.7%
[2009]	0.0%	12.8%	25.6%	52.4%	9.1%
[2010]	0.3%	12.1%	25.1%	52.7%	9.8%
[2011]	0.0%	8.4%	23.4%	58.5%	9.7%
[2012]	0.6%	7.9%	21.3%	54.8%	15.4%
[2013]	0.0%	10.9%	20.5%	55.8%	12.8%
[2014]	0.8%	12.7%	19.1%	54.5%	13.0%
[2015]	0.5%	13.5%	19.9%	56.3%	9.8%
[2016]	2.0%	13.7%	20.4%	56.1%	7.7%
[2017]	0.1%	11.4%	18.6%	50.9%	19.1%
[2018]	0.7%	10.0%	18.0%	57.4%	13.9%
[2020]	0.4%	16.0%	17.2%	48.9%	17.5%
[2021]	0.3%	15.8%	18.8%	40.8%	24.3%
[2022]	0.2%	14.6%	17.6%	49.9%	17.8%
[2023]	0.2%	16.6%	14.4%	49.9%	19.0%

COUNTS FOR MINOR ARTERIAL SEGMENTS

	[C]	[1-5] POOR	[6] FAIR	[7-8] GOOD	[9-10] EXCELLENT	SUM
[1989]	5	16	19	37	1	78
[1990]	2	14	18	38	6	78
[1991]	3	19	17	37	2	78
[1992]	2	22	21	28	5	78
[1993]	4	24	24	46	1	99
[1994]	5	21	23	45	5	99
[1995]	2	24	32	37	4	99
[1996]	2	23	27	41	6	99
[1997]	5	19	43	33	1	101
[1998]	4	22	37	32	6	101
[1999]	3	26	33	31	10	103
[2000]	3	23	26	25	26	103
[2001]	2	22	20	31	47	122
[2002]	4	23	20	49	26	122
[2003]	7	17	19	51	25	119
[2004]	1	13	26	50	30	120
[2005]	0	7	22	52	39	120
[2006]	1	16	19	58	26	120
[2007]	5	13	21	65	16	120
[2008]	0	7	18	67	28	120
[2009]	0	5	18	76	21	120
[2010]	0	5	21	75	19	120
[2011]	1	5	16	75	23	120
[2012]	1	6	16	80	17	120
[2013]	0	11	22	73	14	120
[2014]	2	11	21	72	14	120
[2015]	4	8	16	72	20	120
[2016]	2	7	17	70	24	120
[2017]	1	6	15	53	45	120
[2018]	0	7	18	57	38	120
[2020]	0	8	21	63	28	120
[2021]	0	10	17	71	22	120
[2022]	1	12	17	70	20	120
[2023]	2	10	14	69	25	120

PERCENTAGES FOR MINOR ARTERIAL SEGMENTS *

	[C]	[1-5] POOR	[6] FAIR	[7-8] GOOD	[9-10] EXCELLENT
[1989]	6.4%	20.5%	24.4%	47.4%	1.3%
[1990]	2.6%	17.9%	23.1%	48.7%	7.7%
[1991]	3.8%	24.4%	21.8%	47.4%	2.6%
[1992]	2.6%	28.2%	26.9%	35.9%	6.4%
[1993]	4.0%	24.2%	24.2%	46.5%	1.0%
[1994]	5.1%	21.2%	23.2%	45.5%	5.1%
[1995]	2.0%	24.2%	32.3%	37.4%	4.0%
[1996]	2.0%	23.2%	27.3%	41.4%	6.1%
[1997]	5.0%	18.8%	42.6%	32.7%	1.0%
[1998]	4.0%	21.8%	36.6%	31.7%	5.9%
[1999]	2.9%	25.2%	32.0%	30.1%	9.7%
[2000]	2.9%	22.3%	25.2%	24.3%	25.2%
[2001]	1.6%	18.0%	16.4%	25.4%	38.5%
[2002]	3.3%	18.9%	16.4%	40.2%	21.3%
[2003]	5.9%	14.3%	16.0%	42.9%	21.0%
[2004]	0.8%	10.8%	21.7%	41.7%	25.0%
[2005]	0.0%	5.8%	18.3%	43.3%	32.5%
[2006]	0.8%	13.3%	15.8%	48.3%	21.7%
[2007]	4.2%	10.8%	17.5%	54.2%	13.3%
[2008]	0.0%	5.8%	15.0%	55.8%	23.3%
[2009]	0.0%	4.2%	15.0%	63.3%	17.5%
[2010]	0.0%	4.2%	17.5%	62.5%	15.8%
[2011]	0.8%	4.2%	13.3%	62.5%	19.2%
[2012]	0.8%	5.0%	13.3%	66.7%	14.2%
[2013]	0.0%	9.2%	18.3%	60.8%	11.7%
[2014]	1.7%	9.2%	17.5%	60.0%	11.7%
[2015]	3.3%	6.7%	13.3%	60.0%	16.7%
[2016]	1.7%	5.8%	14.2%	58.3%	20.0%
[2017]	0.8%	5.0%	12.5%	44.2%	37.5%
[2018]	0.0%	5.8%	15.0%	47.5%	31.7%
[2020]	0.0%	6.7%	17.5%	52.5%	23.3%
[2021]	0.0%	8.3%	14.2%	59.2%	18.3%
[2022]	0.8%	10.0%	14.2%	58.3%	16.7%
[2023]	1.7%	8.3%	11.7%	57.5%	20.8%

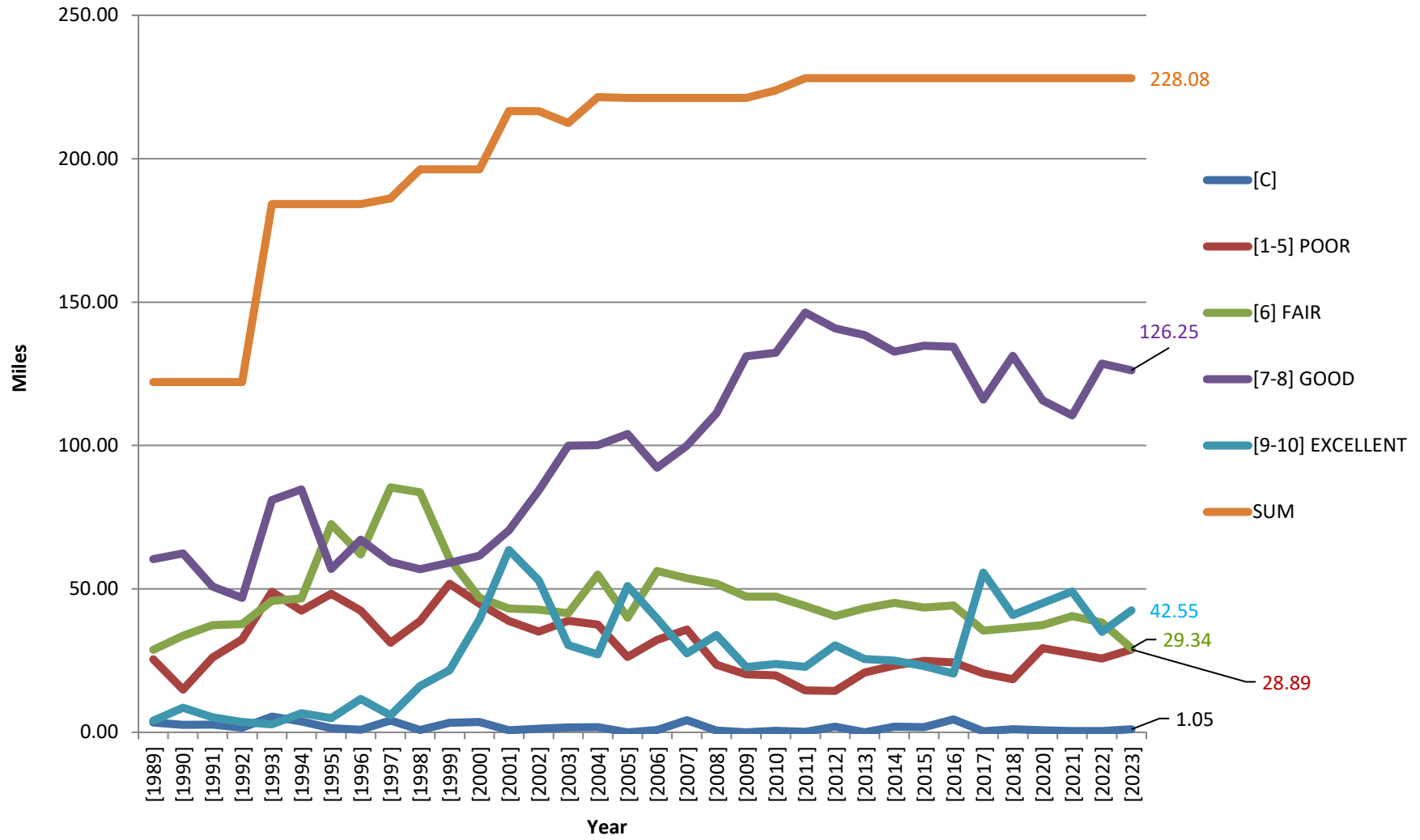
MILEAGE FOR MINOR ARTERIAL SEGMENTS

	[C]	[1-5] POOR	[6] FAIR	[7-8] GOOD	[9-10] EXCELLENT	SUM
[1989]	0.64	6.22	5.87	14.50	0.94	28.17
[1990]	0.14	3.51	6.65	14.30	3.57	28.17
[1991]	0.45	4.73	7.82	12.91	2.26	28.17
[1992]	0.14	7.06	7.01	12.64	1.32	28.17
[1993]	0.68	14.51	14.70	28.11	1.03	59.03
[1994]	0.60	15.40	11.74	29.05	2.24	59.03
[1995]	0.14	15.43	21.29	19.68	2.49	59.03
[1996]	0.14	13.94	17.07	22.23	5.65	59.03
[1997]	2.18	9.40	23.14	21.51	2.40	58.63
[1998]	0.65	12.10	24.53	17.41	4.22	58.91
[1999]	0.65	14.97	21.15	16.58	5.56	58.91
[2000]	0.32	8.44	13.79	16.18	20.18	58.91
[2001]	0.14	7.88	11.92	21.20	29.35	70.49
[2002]	0.84	7.70	12.27	30.37	19.31	70.49
[2003]	1.45	5.17	13.32	34.38	15.88	70.20
[2004]	0.36	4.83	16.89	35.55	11.81	69.44
[2005]	0.00	1.59	8.81	39.29	19.61	69.30
[2006]	0.26	2.54	12.51	38.52	15.47	69.30
[2007]	0.87	4.53	14.03	39.67	10.20	69.30
[2008]	0.00	0.99	12.47	39.73	16.11	69.30
[2009]	0.00	0.75	8.29	51.45	8.81	69.30
[2010]	0.00	1.19	8.50	50.85	8.76	69.30
[2011]	0.21	1.19	6.91	53.57	7.42	69.30
[2012]	1.00	1.84	6.76	53.84	5.86	69.30
[2013]	0.00	3.56	10.62	49.84	5.28	69.30
[2014]	0.79	3.21	14.84	46.18	4.28	69.30
[2015]	1.02	3.43	11.83	45.43	7.59	69.30
[2016]	1.26	2.61	11.82	45.43	8.18	69.30
[2017]	0.10	2.51	6.04	35.29	25.36	69.30
[2018]	0.00	2.58	7.84	40.10	18.78	69.30
[2020]	0.00	3.95	10.00	38.05	17.30	69.30
[2021]	0.00	2.38	10.67	45.64	10.61	69.30
[2022]	0.18	2.54	10.38	49.38	6.82	69.30
[2023]	0.74	2.61	6.50	47.08	12.37	69.30

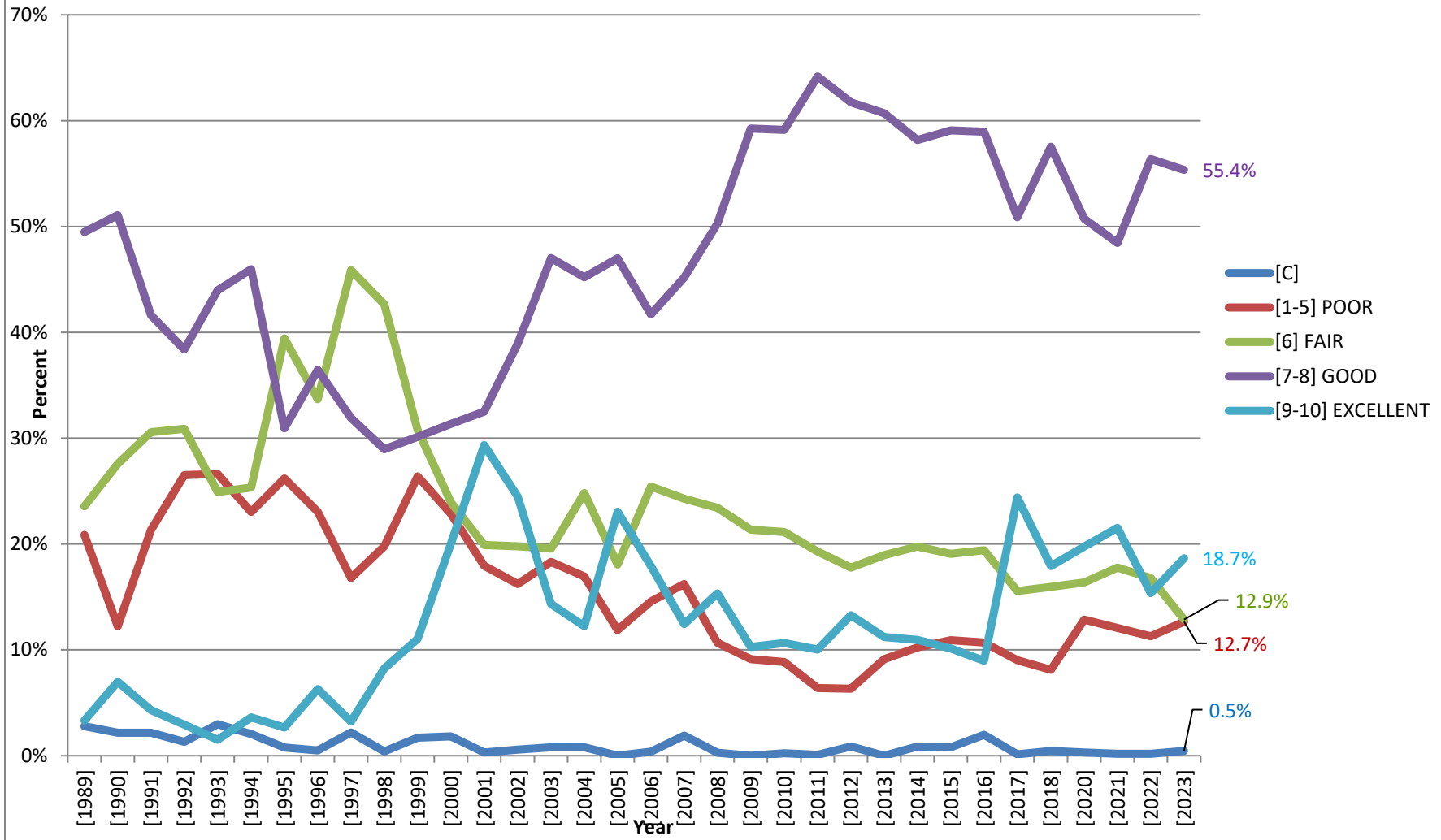
PERCENT MILEAGE FOR MINOR ARTERIAL SEGMENTS *

	[C]	[1-5] POOR	[6] FAIR	[7-8] GOOD	[9-10] EXCELLENT
[1989]	2.3%	22.1%	20.8%	51.5%	3.3%
[1990]	0.5%	12.5%	23.6%	50.8%	12.7%
[1991]	1.6%	16.8%	27.8%	45.8%	8.0%
[1992]	0.5%	25.1%	24.9%	44.9%	4.7%
[1993]	1.2%	24.6%	24.9%	47.6%	1.7%
[1994]	1.0%	26.1%	19.9%	49.2%	3.8%
[1995]	0.2%	26.1%	36.1%	33.3%	4.2%
[1996]	0.2%	23.6%	28.9%	37.7%	9.6%
[1997]	3.7%	16.0%	39.5%	36.7%	4.1%
[1998]	1.1%	20.5%	41.6%	29.6%	7.2%
[1999]	1.1%	25.4%	35.9%	28.1%	9.4%
[2000]	0.5%	14.3%	23.4%	27.5%	34.3%
[2001]	0.2%	11.2%	16.9%	30.1%	41.6%
[2002]	1.2%	10.9%	17.4%	43.1%	27.4%
[2003]	2.1%	7.4%	19.0%	49.0%	22.6%
[2004]	0.5%	7.0%	24.3%	51.2%	17.0%
[2005]	0.0%	2.3%	12.7%	56.7%	28.3%
[2006]	0.4%	3.7%	18.1%	55.6%	22.3%
[2007]	1.3%	6.5%	20.2%	57.2%	14.7%
[2008]	0.0%	1.4%	18.0%	57.3%	23.2%
[2009]	0.0%	1.1%	12.0%	74.2%	12.7%
[2010]	0.0%	1.7%	12.3%	73.4%	12.6%
[2011]	0.3%	1.7%	10.0%	77.3%	10.7%
[2012]	1.4%	2.7%	9.8%	77.7%	8.5%
[2013]	0.0%	5.1%	15.3%	71.9%	7.6%
[2014]	1.1%	4.6%	21.4%	66.6%	6.2%
[2015]	1.5%	4.9%	17.1%	65.6%	11.0%
[2016]	1.8%	3.8%	17.1%	65.6%	11.8%
[2017]	0.1%	3.6%	8.7%	50.9%	36.6%
[2018]	0.0%	3.7%	11.3%	57.9%	27.1%
[2020]	0.0%	5.7%	14.4%	54.9%	25.0%
[2021]	0.0%	3.4%	15.4%	65.9%	15.3%
[2022]	0.3%	3.7%	15.0%	71.3%	9.8%
[2023]	1.1%	3.8%	9.4%	67.9%	17.8%

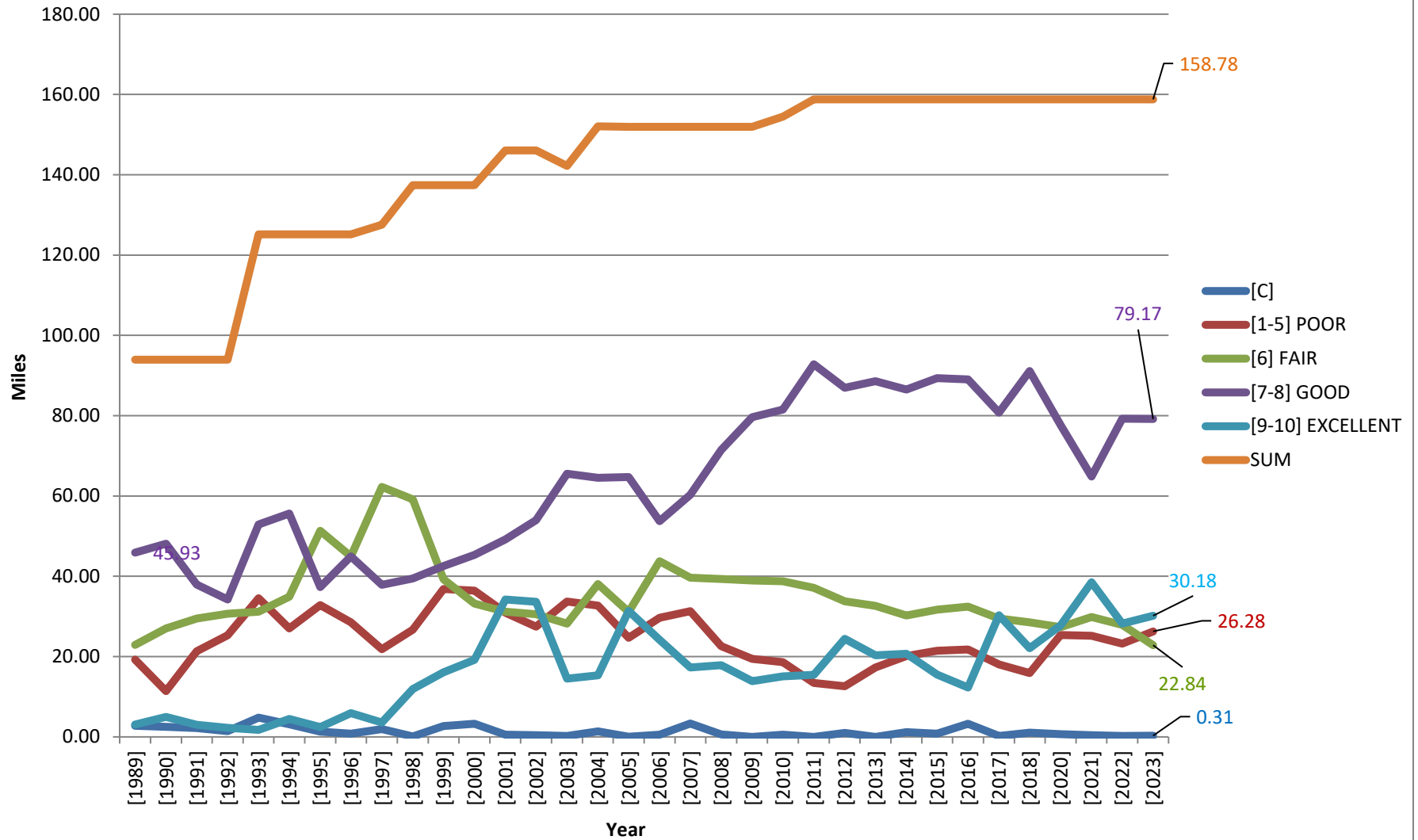
Total Mileage for ALL Road Segments



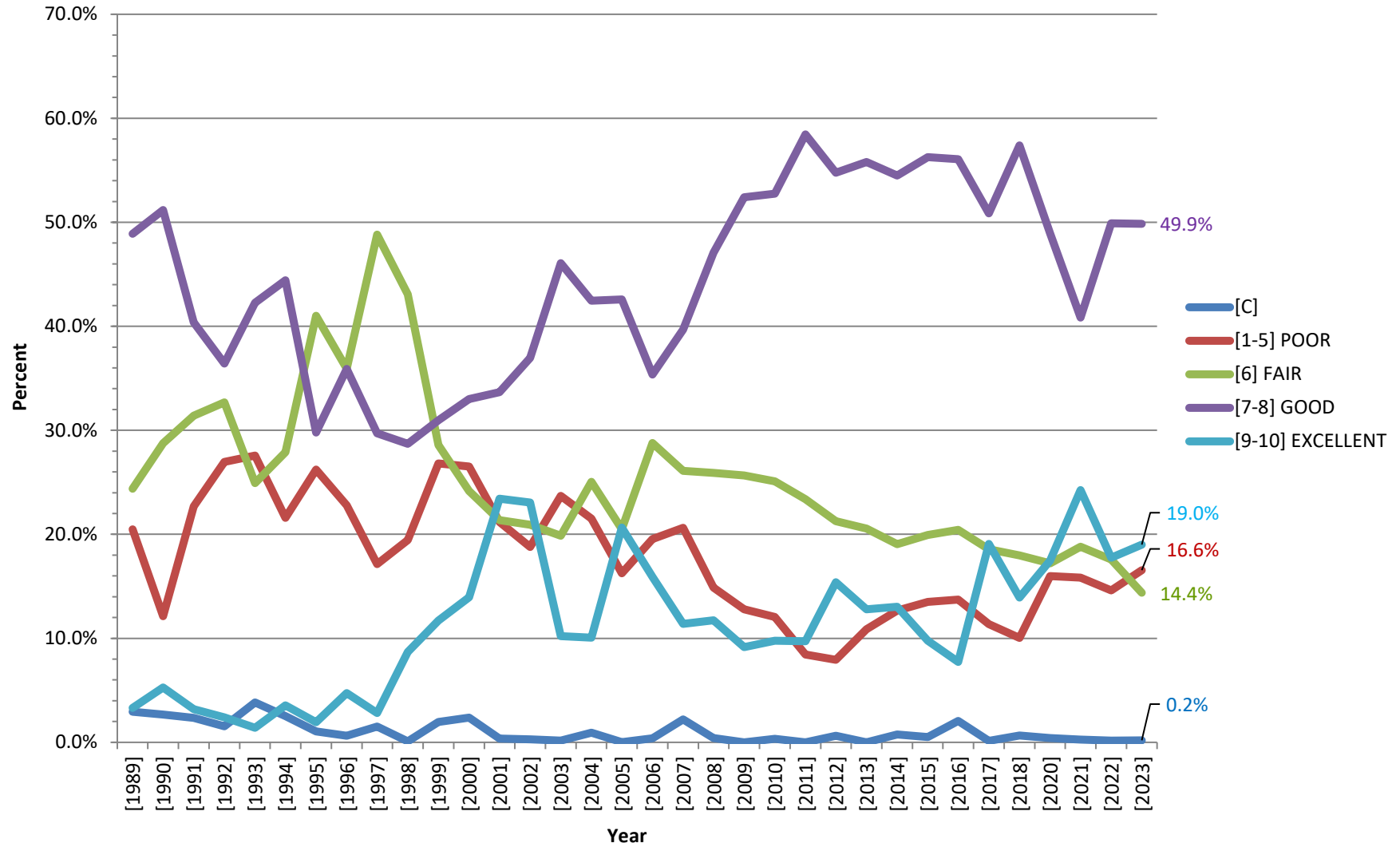
Percent Mileage for ALL Road Segments



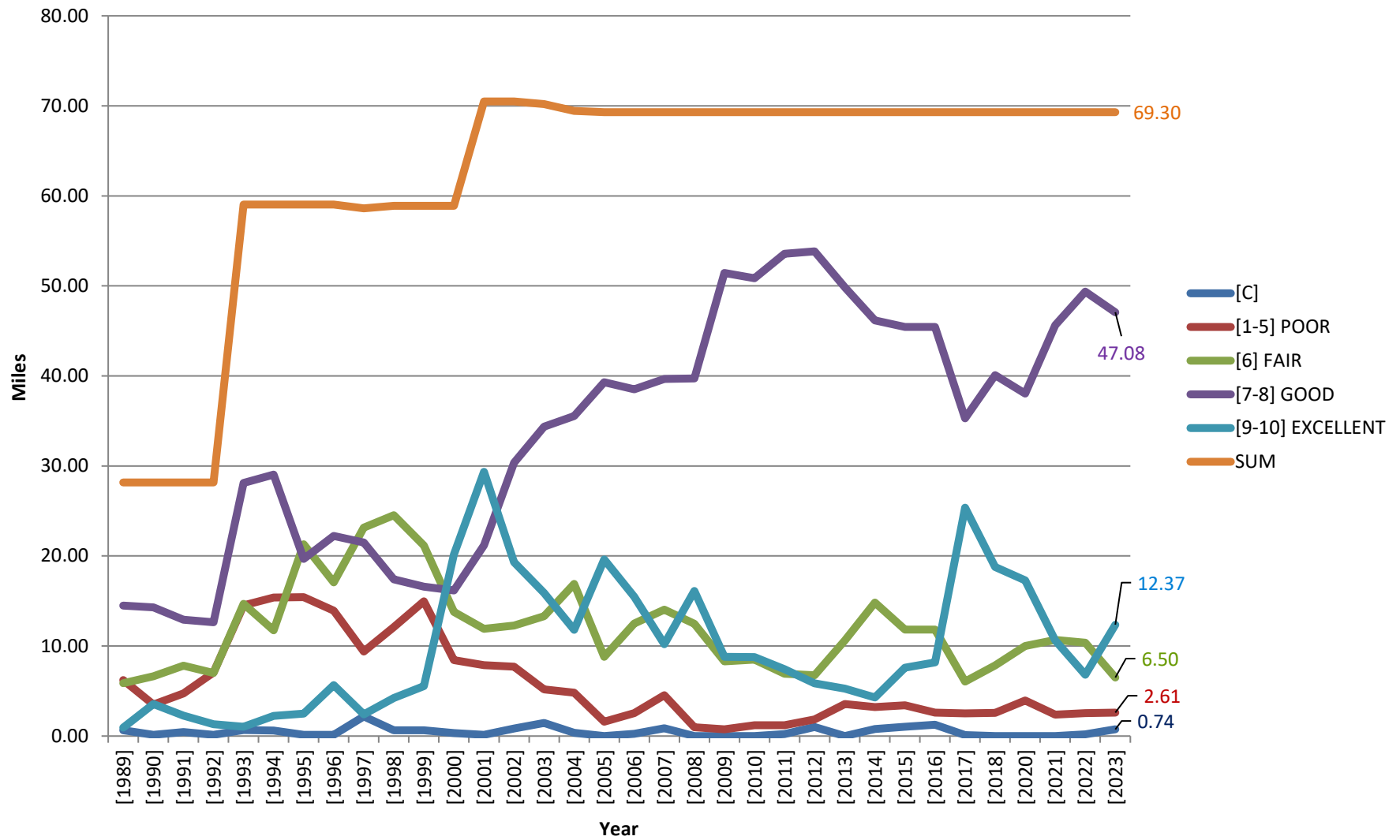
Total Mileage for COLLECTOR Road Segments



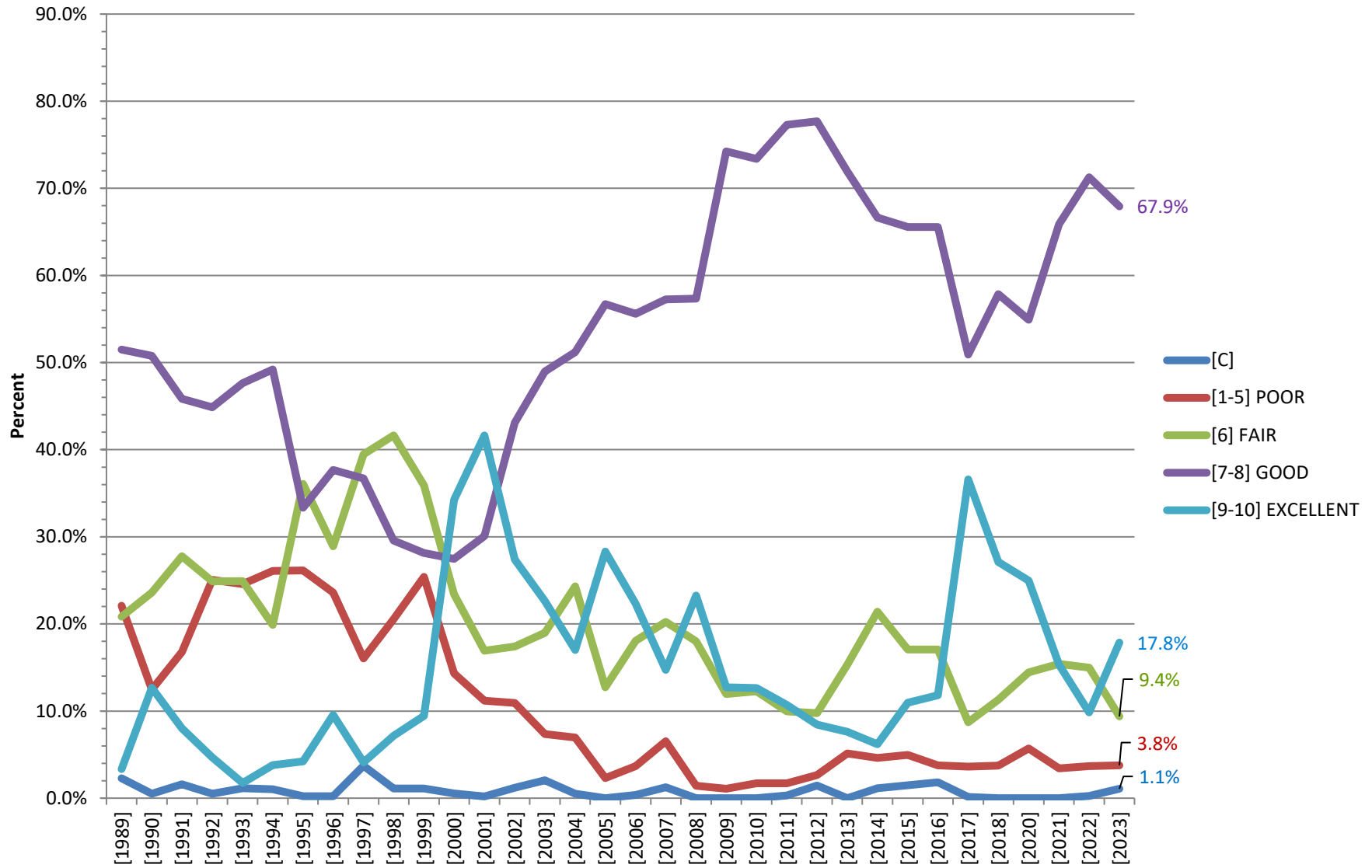
Percent Mileage for COLLECTOR Road Segments



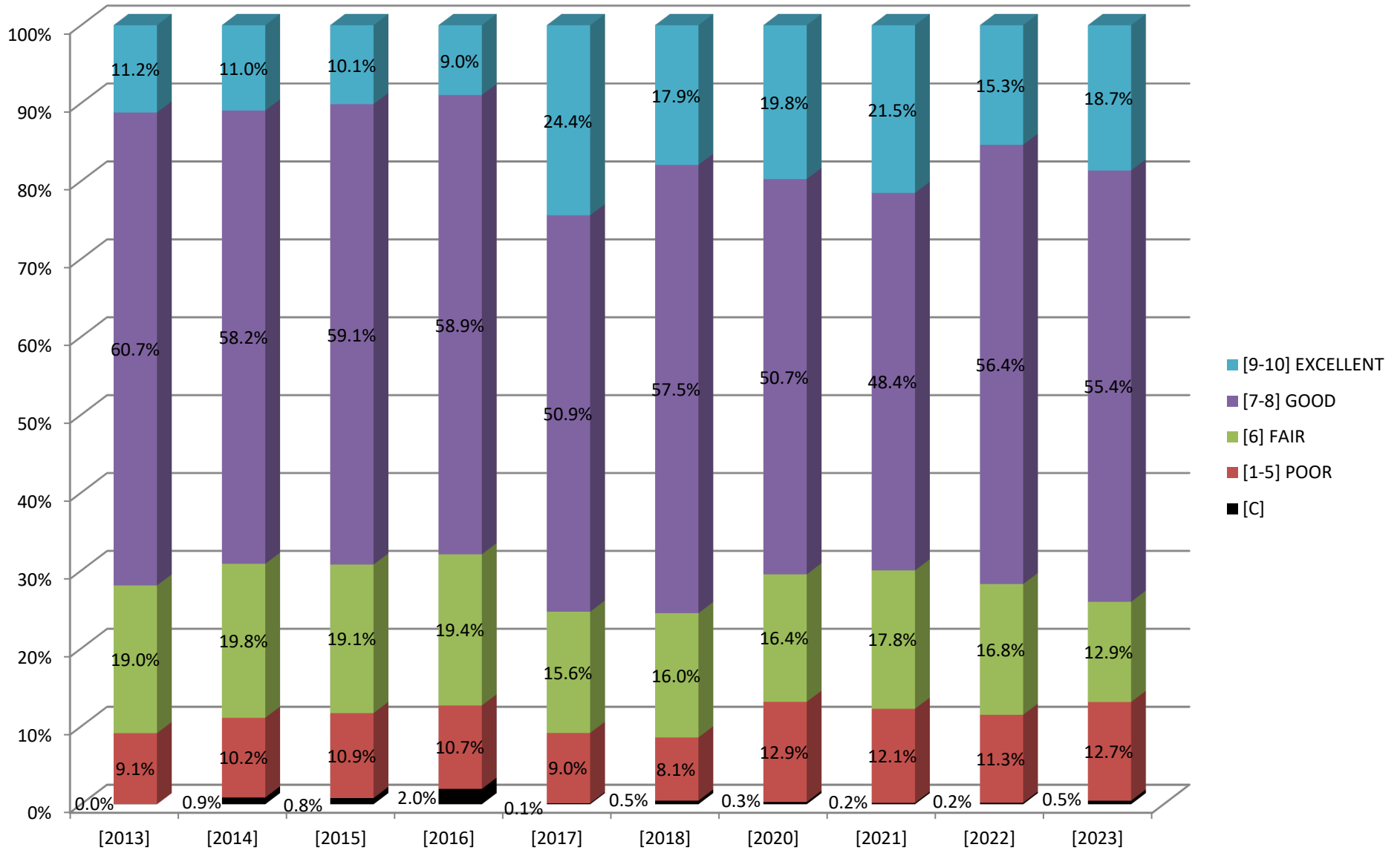
Total Mileage for MINOR ARTERIAL Road Segments



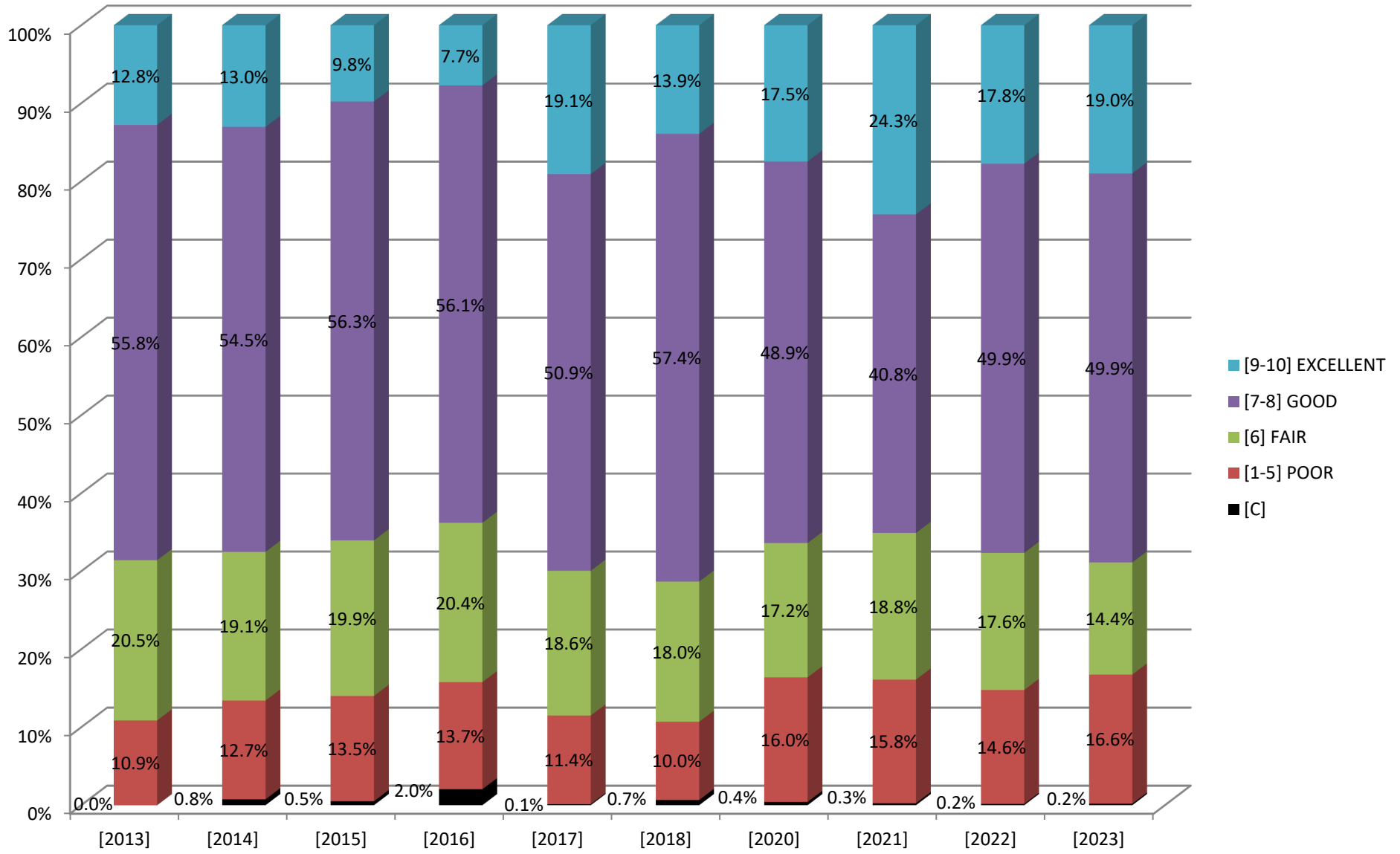
Percent Mileage for MINOR ARTERIAL Road Segments



BMTS Urban Area All Road Pavement Scores - % Mileage



BMTS Urban Area Collector Pavement Scores - % Mileage



BMTS Urban Area Minor Arterial Pavement Scores - % Mileage

